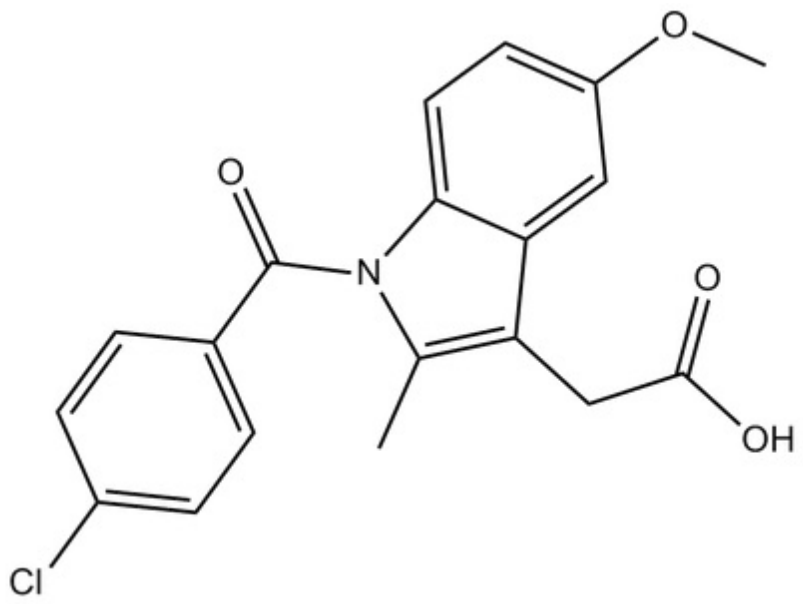


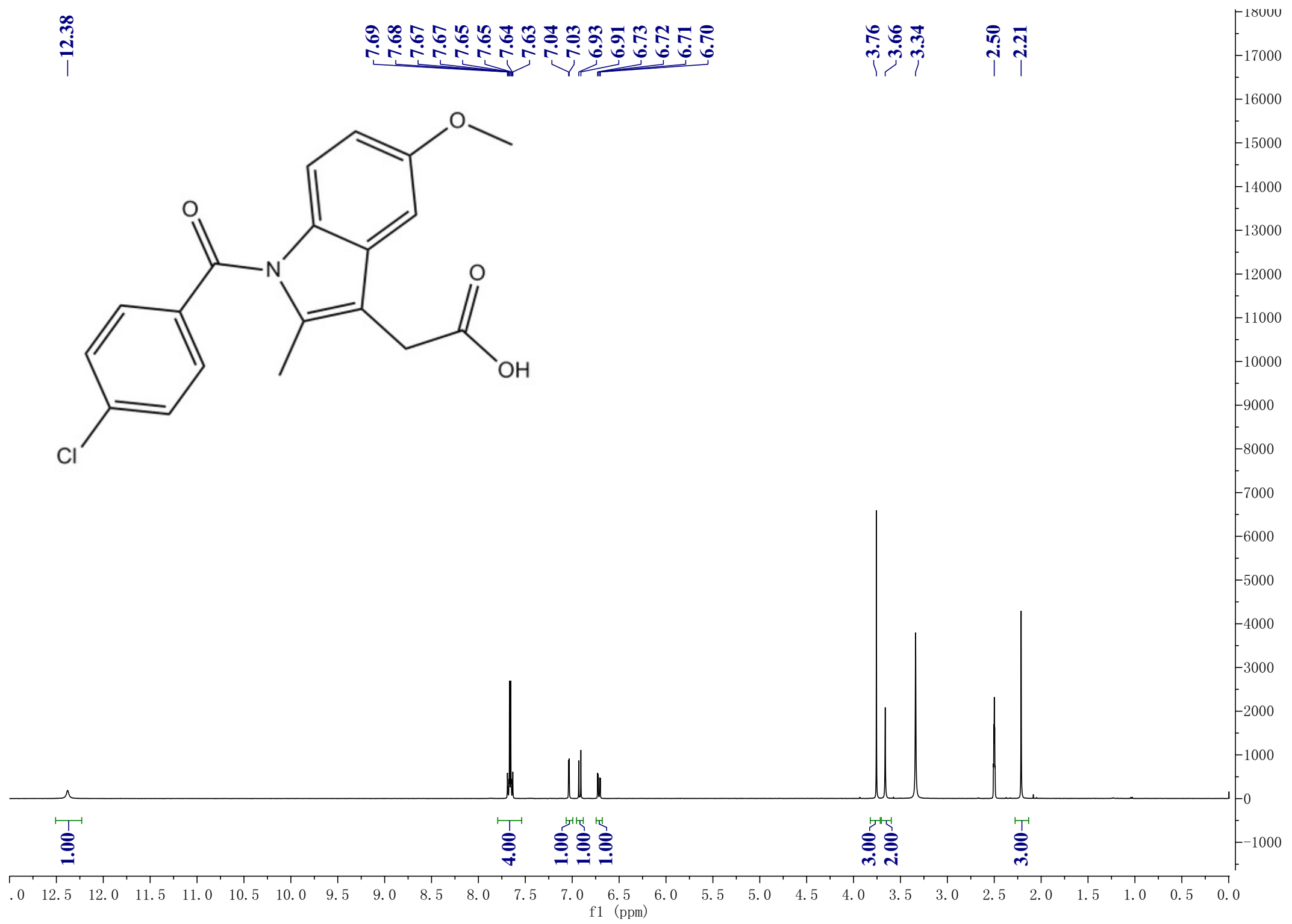
—12.38



7.69
7.68
7.67
7.67
7.65
7.65
7.64
7.63
7.04
7.03
6.93
6.91
6.73
6.72
6.71
6.70

~3.76
~3.66
~3.34

—2.50
—2.21



1.00

4.00

1.00

1.00

1.00

3.00

2.00

3.00

f1 (ppm)