

# High Performance Liquid Chromatography

## Analysis Information

**Product Name:** Diphemanil Methylsulfate

**Operator:** David

**Injection Date:** 5/12/2020 11:45:08 PM

**Batch No.:** 1

## HPLC Condition

**Column :** ZORBAX Eclipse Pluse C18 3.5 $\mu$ m 4.6mmx100mm

**Solvent A:** H2O+0.1%TFA

**Solvent B:** ACN+0.1%TFA

**Gradient:**

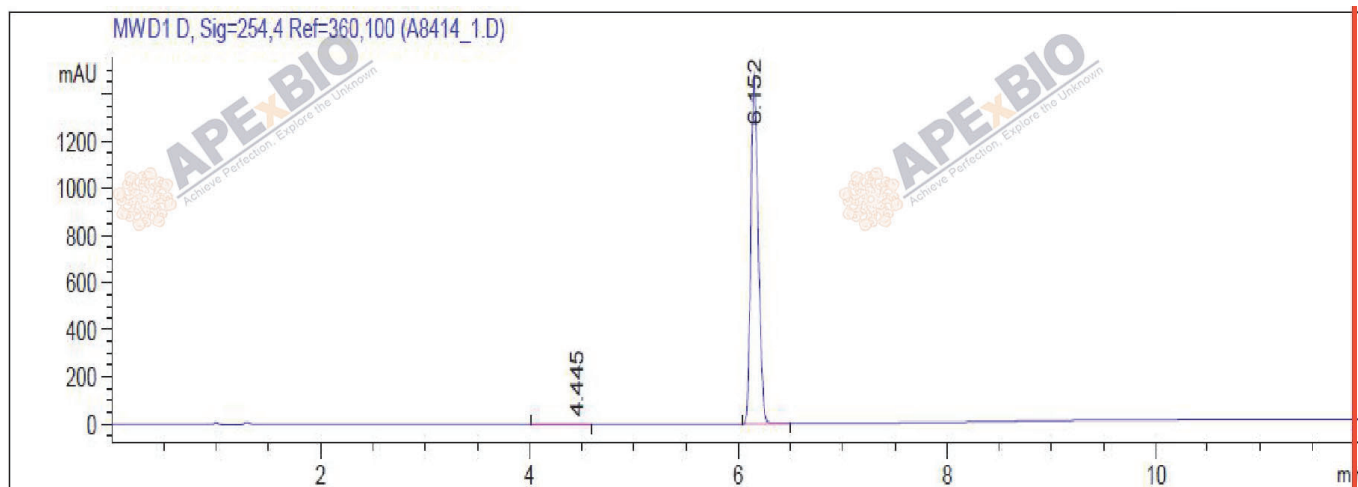
Time	A	B
0.0min	80%	20%
2.0min	80%	20%
7.0min	5%	95%
10.00min	0%	100%
12.00min	0%	100%
15.00min	Stop	Stop

**Flow rate:** 1mL/min

**Wavelength:** 254nm

**Volume:** 5 $\mu$ l

## Result



Rank	RetTime(min)	Area(mAU*s)	Area %
1	4.445	8.02322	0.1100
2	6.152	7285.27734	99.8900

## Caution

**FOR RESEARCH PURPOSES ONLY.**

**NOT FOR HUMAN, VETERINARY DIAGNOSTIC OR THERAPEUTIC USE.**

**APEX BIO Technology**

[www.apexbt.com](http://www.apexbt.com)

7505 Fannin street, Suite 410, Houston, TX 77054.

Tel: +1-832-696-8203 | Fax: +1-832-641-3177 | Email: [info@apexbt.com](mailto:info@apexbt.com)