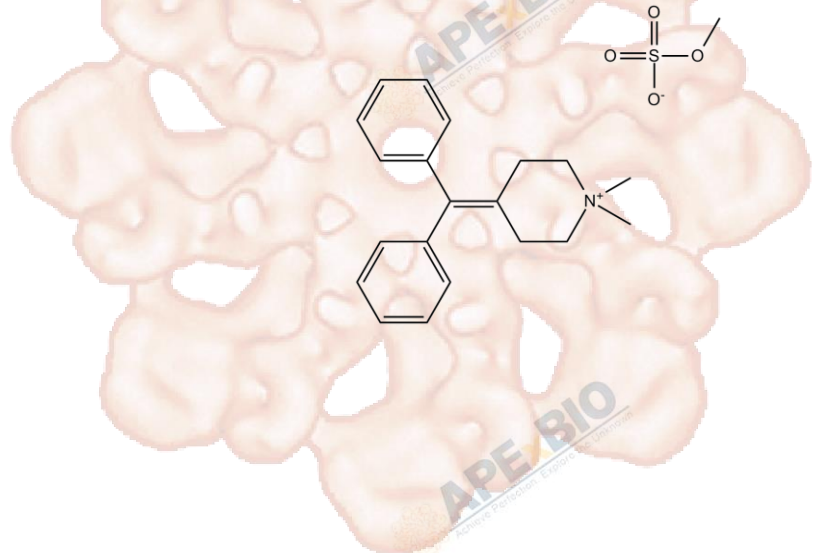


# Product Data Sheet

## Diphepanil Methylsulfate

**Cat. No.:** A8414  
**CAS No.:** 62-97-5  
**Formula:** C<sub>20</sub>H<sub>24</sub>N·CH<sub>3</sub>O<sub>4</sub>S  
**M.Wt:** 389.51  
**Synonyms:**  
**Target:** Neuroscience  
**Pathway:** AChR  
**Storage:** Store at -20°C



### Solvent & Solubility

≥10.7 mg/mL in EtOH; ≥7.7 mg/mL in H<sub>2</sub>O; ≥9.74 mg/mL in DMSO

In Vitro

Preparing Stock Solutions	Solvent	Mass Concentration	Mass		
			1mg	5mg	10mg
		1 mM	2.5673 mL	12.8366 mL	25.6733 mL
		5 mM	0.5135 mL	2.5673 mL	5.1347 mL
		10 mM	0.2567 mL	1.2837 mL	2.5673 mL

Please refer to the solubility information to select the appropriate solvent.

### Biological Activity

Shortsummary

AChR antagonist

IC<sub>50</sub> & Target

In Vitro

#### Cell Viability Assay

Preparation method:

In Vivo

#### Animal experiment

Applications:

### Product Citations

See more customer validations on [www.apexbt.com](http://www.apexbt.com).

## References

## Caution

**FOR RESEARCH PURPOSES ONLY.**

**NOT FOR HUMAN, VETERINARY DIAGNOSTIC OR THERAPEUTIC USE.**

Specific storage and handling information for each product is indicated on the product datasheet. Most APEX BIO products are stable under the recommended conditions. Products are sometimes shipped at a temperature that differs from the recommended storage temperature. Shortterm storage of many products are stable in the short-term at temperatures that differ from that required for long-term storage. We ensure that the product is shipped under conditions that will maintain the quality of the reagents. Upon receipt of the product, follow the storage recommendations on the product data sheet.

**APEX BIO Technology**

**[www.apexbt.com](http://www.apexbt.com)**

7505 Fannin street, Suite 410, Houston, TX 77054.

Tel: +1-832-696-8203 | Fax: +1-832-641-3177 | Email: [info@apexbt.com](mailto:info@apexbt.com)

