

High Performance Liquid Chromatography

Analysis Information

Product Name: CHIR-99021 (CT99021) HCl
Operator: David
Injection Date: 03/07/2024 12:29:30
Batch No.: 4

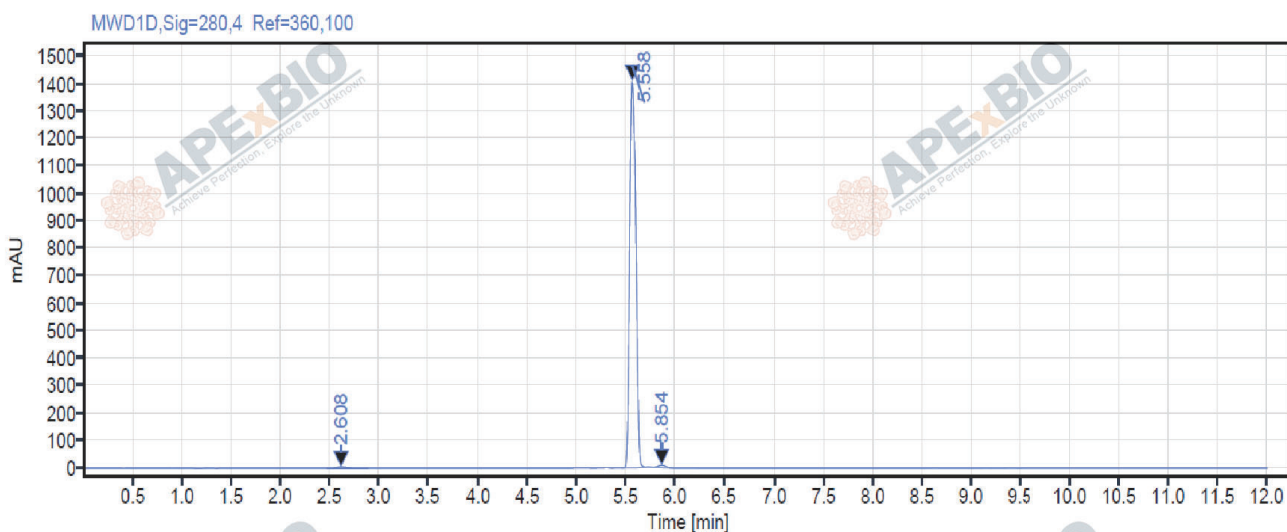
HPLC Condition

Column : ZORBAX Eclipse Pluse C18 3.5 μ m 4.6mmx100mm
Solvent A: H2O+0.1%TFA
Solvent B: ACN+0.1%TFA
Gradient:

| Time | A | B |
|---------|------|------|
| 0.0min | 80% | 20% |
| 2.0min | 80% | 20% |
| 7.0min | 5% | 95% |
| 10.0min | 0% | 100% |
| 12.0min | 0% | 100% |
| 15.0min | Stop | Stop |

Flow rate: 1ml/min
Wavelength: 280nm
Volume: 2 μ l

Result



| Rank | RetTime(min) | Area(mAU*s) | Area % |
|------|--------------|-------------|--------|
| 1 | 2.608 | 32.09 | 0.52 |
| 2 | 5.558 | 6136.24 | 98.72 |
| 3 | 5.854 | 47.57 | 0.77 |

Caution

FOR RESEARCH PURPOSES ONLY.

NOT FOR HUMAN, VETERINARY DIAGNOSTIC OR THERAPEUTIC USE.

APEX BIO Technology

www.apexbt.com

7505 Fannin street, Suite 410, Houston, TX 77054.

Tel: +1-832-696-8203 | Fax: +1-832-641-3177 | Email: info@apexbt.com