



# High Performance Liquid Chromatography

## 1. Analysis Information

Product Name: Bleomycin Sulfate  
Operator: David  
Injection Date: 3/20/2018 3:34:17 PM  
Batch No.: 3

## 2. HPLC Condition

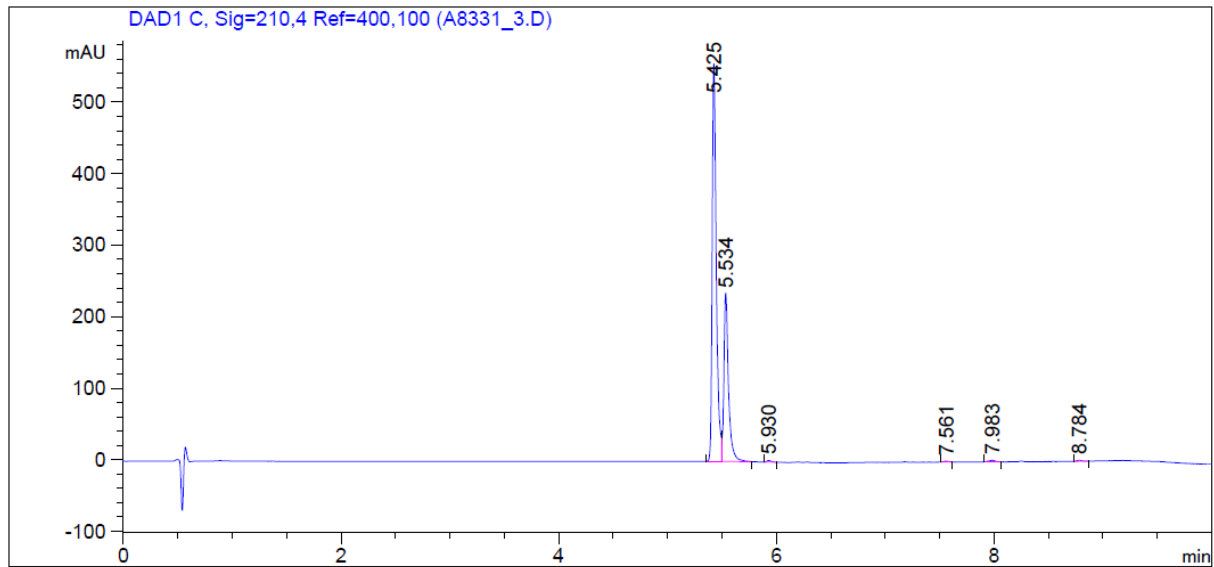
Column: Athena C18, 3  $\mu$ m, 2.1mm  $\times$  100 mm  
Solvent A: 0.1% H<sub>3</sub>PO<sub>4</sub> in 100% Acetonitrile  
Solvent B: 0.1% H<sub>3</sub>PO<sub>4</sub> in 100% Water

Gradient:

Time	A	B
0.0min	0%	100%
2.0min	0%	100%
7.0min	95%	5%
10.0 min	95%	5%
10.0min	Stop	Stop

Flow rate: 0.45ml/min  
Wavelength: 210nm  
Volume: 10 $\mu$ l

## 3. Result



Rank	RetTime(min)	Area(mAU*s)	Area %
1	5.425	1453.03357	67.1279
2	5.534	688.68359	31.8161
3	5.930	5.71103	0.2638
4	7.561	3.16513	0.1462
5	7.983	9.96107	0.4602
6	8.784	4.02127	0.1858