



# High Performance Liquid Chromatography

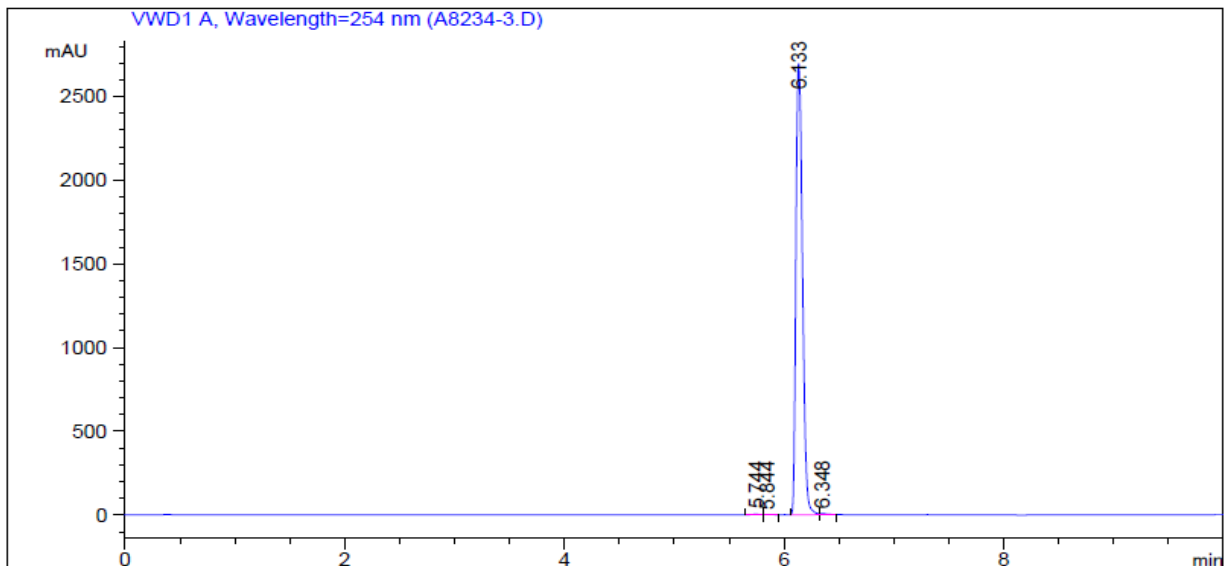
## 1. Analysis Information

Product Name:	Erlotinib Hydrochloride
Operator:	David
Injection Date:	2/19/2016 4:38:44 PM
Batch No.:	3

## 2. HPLC Condition

Column:	Athena C18, 3 $\mu$ m, 2.1mm $\times$ 100 mm																						
Solvent A:	0.1% H3PO4 in 100% Acetonitrile																						
Solvent B:	0.1% H3PO4 in 100% Water																						
Gradient:	<table border="1"><thead><tr><th>Time</th><th>A</th><th>B</th></tr></thead><tbody><tr><td>0.0min</td><td>0%</td><td>100%</td></tr><tr><td>2.0min</td><td>0%</td><td>100%</td></tr><tr><td>6.0min</td><td>95%</td><td>5%</td></tr><tr><td>9.0min</td><td>95%</td><td>5%</td></tr><tr><td>10.0min</td><td>0%</td><td>100%</td></tr><tr><td>10.0min</td><td>Stop</td><td>Stop</td></tr></tbody></table>		Time	A	B	0.0min	0%	100%	2.0min	0%	100%	6.0min	95%	5%	9.0min	95%	5%	10.0min	0%	100%	10.0min	Stop	Stop
Time	A	B																					
0.0min	0%	100%																					
2.0min	0%	100%																					
6.0min	95%	5%																					
9.0min	95%	5%																					
10.0min	0%	100%																					
10.0min	Stop	Stop																					
Flow rate:	0.4ml/min																						
Wavelength:	254nm																						
Volume:	10 $\mu$ l																						

## 3. Result



Rank	RetTime(min)	Area(mAU*s)	Area %
1	5.744	16.99610	0.1506
2	5.844	12.25408	0.1086
3	6.133	1.12184e4	99.4254
4	6.348	35.57927	0.3153