

Certificate of Analysis

Product Name: Romidepsin (FK228, depsipeptide)

Cat. No.: A8173

Batch No.: 2

Physical and Chemical Properties

Batch Molecular Formula: C₂₄H₃₆N₄O₆S₂

Batch Molecular Weight: 540.7

Purity: >99%

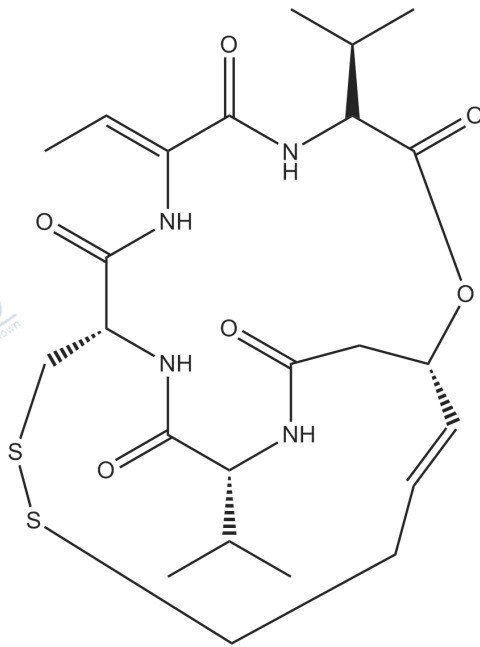
Cas No.: 128517-07-7

Analytical Data

HPLC: HPLC

Mass Spectrum: Consistent with structure

Structure



Caution

FOR RESEARCH PURPOSES ONLY.

NOT FOR HUMAN, VETERINARY DIAGNOSTIC OR THERAPEUTIC USE.

APEX BIO Technology

www.apexbt.com

7505 Fannin street, Suite 410, Houston, TX 77054.

Tel: +1-832-696-8203 | Fax: +1-832-641-3177 | Email: info@apexbt.com