

# High Performance Liquid Chromatography

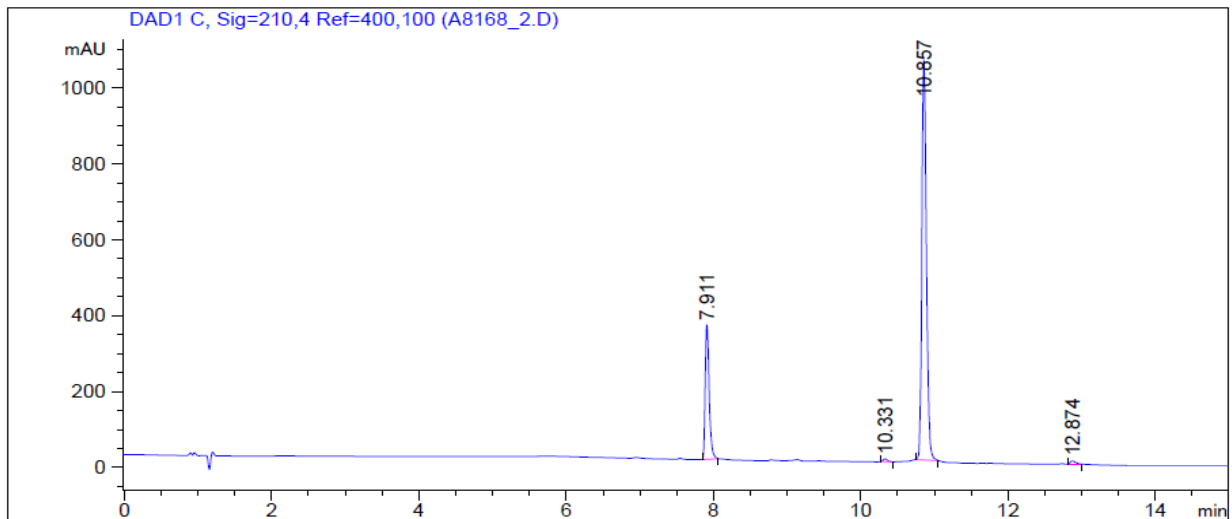
## 1. Analysis Information

Product Name:	HA14-1
Operator:	David
Injection Date:	2/9/2017 4:50:06 PM
Batch No.:	2

## 2. HPLC Condition

Column:	Athena C18, 3 $\mu$ m, 2.1mm $\times$ 100 mm																			
Solvent A:	0.1% H <sub>3</sub> PO <sub>4</sub> in 100% Acetonitrile																			
Solvent B:	0.1% H <sub>3</sub> PO <sub>4</sub> in 100% Water																			
Gradient:	<table border="1"> <thead> <tr> <th>Time</th> <th>A</th> <th>B</th> </tr> </thead> <tbody> <tr> <td>0.0min</td> <td>0%</td> <td>100%</td> </tr> <tr> <td>2.0min</td> <td>0%</td> <td>100%</td> </tr> <tr> <td>10.0min</td> <td>95%</td> <td>5%</td> </tr> <tr> <td>15.0min</td> <td>95%</td> <td>5%</td> </tr> <tr> <td>15.0min</td> <td>Stop</td> <td>Stop</td> </tr> </tbody> </table>		Time	A	B	0.0min	0%	100%	2.0min	0%	100%	10.0min	95%	5%	15.0min	95%	5%	15.0min	Stop	Stop
Time	A	B																		
0.0min	0%	100%																		
2.0min	0%	100%																		
10.0min	95%	5%																		
15.0min	95%	5%																		
15.0min	Stop	Stop																		
Flow rate:	0.4ml/min																			
Wavelength:	210nm																			
Volume:	10 $\mu$ l																			

## 3. Result



Rank	RetTime(min)	Area(mAU*s)	Area %
1	7.911	1326.15869	22.5157
2	10.331	27.01563	0.4587
3	10.857	4493.00293	76.2828
4	12.874	43.75309	0.7428