

High Performance Liquid Chromatography

Analysis Information

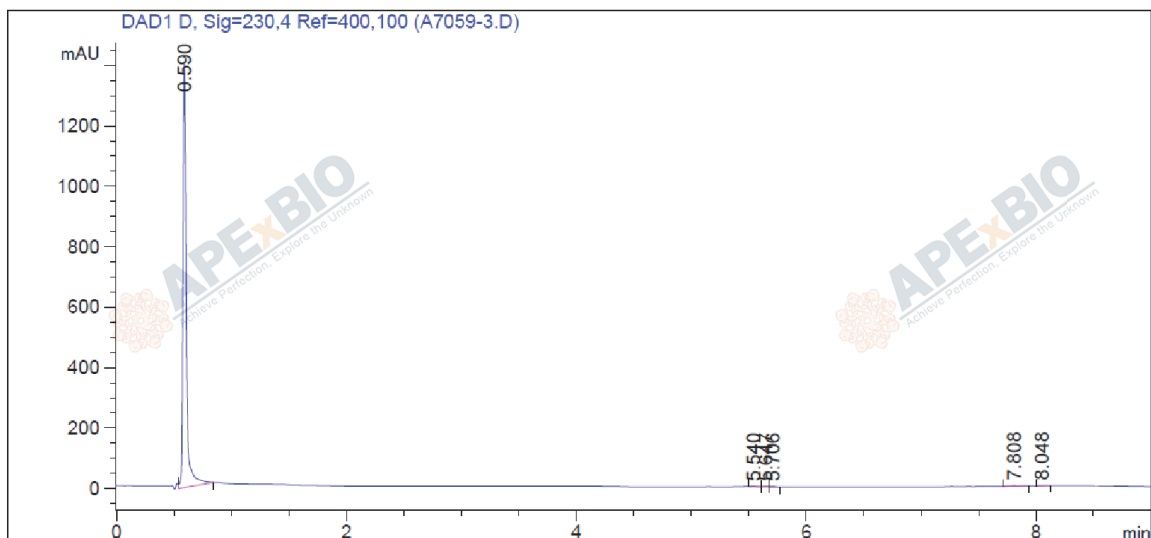
Product Name: HOSu
Operator: David
Injection Date: 10/18/2021 10:30:33 AM
Batch No.: 3

HPLC Condition

Column : Athena C18, 3 μ m, 2.1mm \times 100 mm
Solvent A: ACN+0.1%TFA
Solvent B: H2O+0.1%TFA
Gradient:

Time	A	B
0.0min	0%	100%
1.5min	0%	100%
6.0min	95%	5%
9.0min	95%	5%
9.0min	Stop	Stop

Flow rate: 0.46ml/min
Wavelength: 230nm
Volume: 3 μ l



Rank	RetTime(min)	Area(mAU*s)	Area %
1	0.590	2802.74048	99.1435
2	5.540	3.83777	0.1358
3	5.647	2.62338	0.0928
4	5.706	4.14863	0.1468
5	7.808	10.63872	0.3763
6	8.048	2.96394	0.1048

Caution

FOR RESEARCH PURPOSES ONLY.

NOT FOR HUMAN, VETERINARY DIAGNOSTIC OR THERAPEUTIC USE.

APEX BIO Technology

www.apexbt.com

7505 Fannin street, Suite 410, Houston, TX 77054.

Tel: +1-832-696-8203 | Fax: +1-832-641-3177 | Email: info@apexbt.com

