

## Certificate of Analysis

Product Name: HATU

Cat. No.: A7022

Batch No.: 1

### Physical and Chemical Properties

Batch Molecular Formula: C<sub>10</sub>H<sub>15</sub>F<sub>6</sub>N<sub>6</sub>O<sub>P</sub>

Batch Molecular Weight: 380.2

Purity: >98%

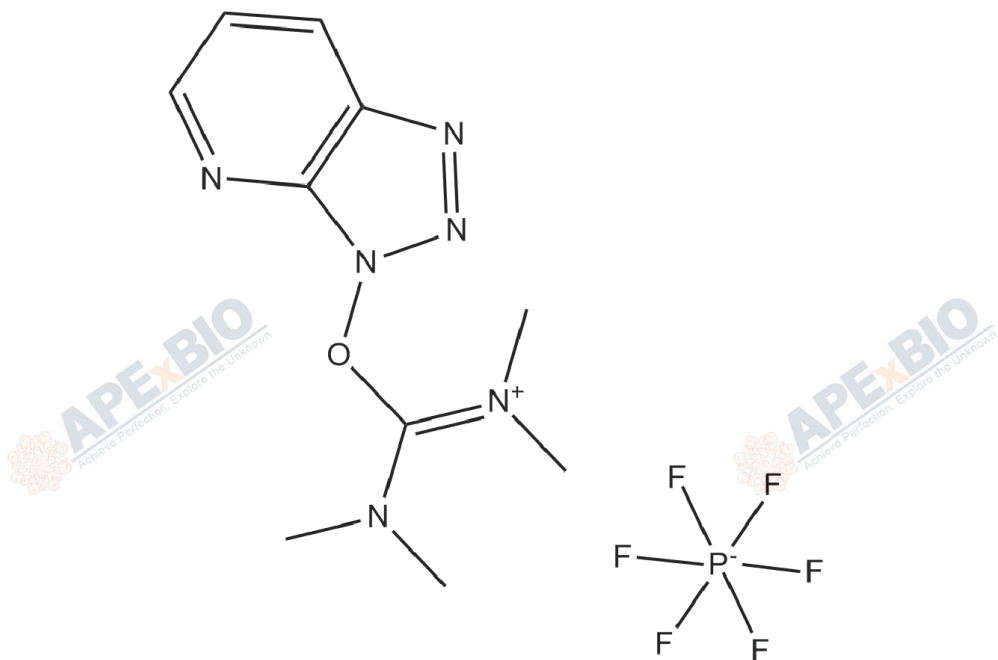
Cas No.: 148893-10-1

### Analytical Data

HPLC: HPLC

Mass Spectrum: Consistent with structure

### Structure



## Caution

**FOR RESEARCH PURPOSES ONLY.**

**NOT FOR HUMAN, VETERINARY DIAGNOSTIC OR THERAPEUTIC USE.**

**APEX BIO Technology**

**[www.apexbt.com](http://www.apexbt.com)**

7505 Fannin street, Suite 410, Houston, TX 77054.

Tel: +1-832-696-8203 | Fax: +1-832-641-3177 | Email: [info@apexbt.com](mailto:info@apexbt.com)