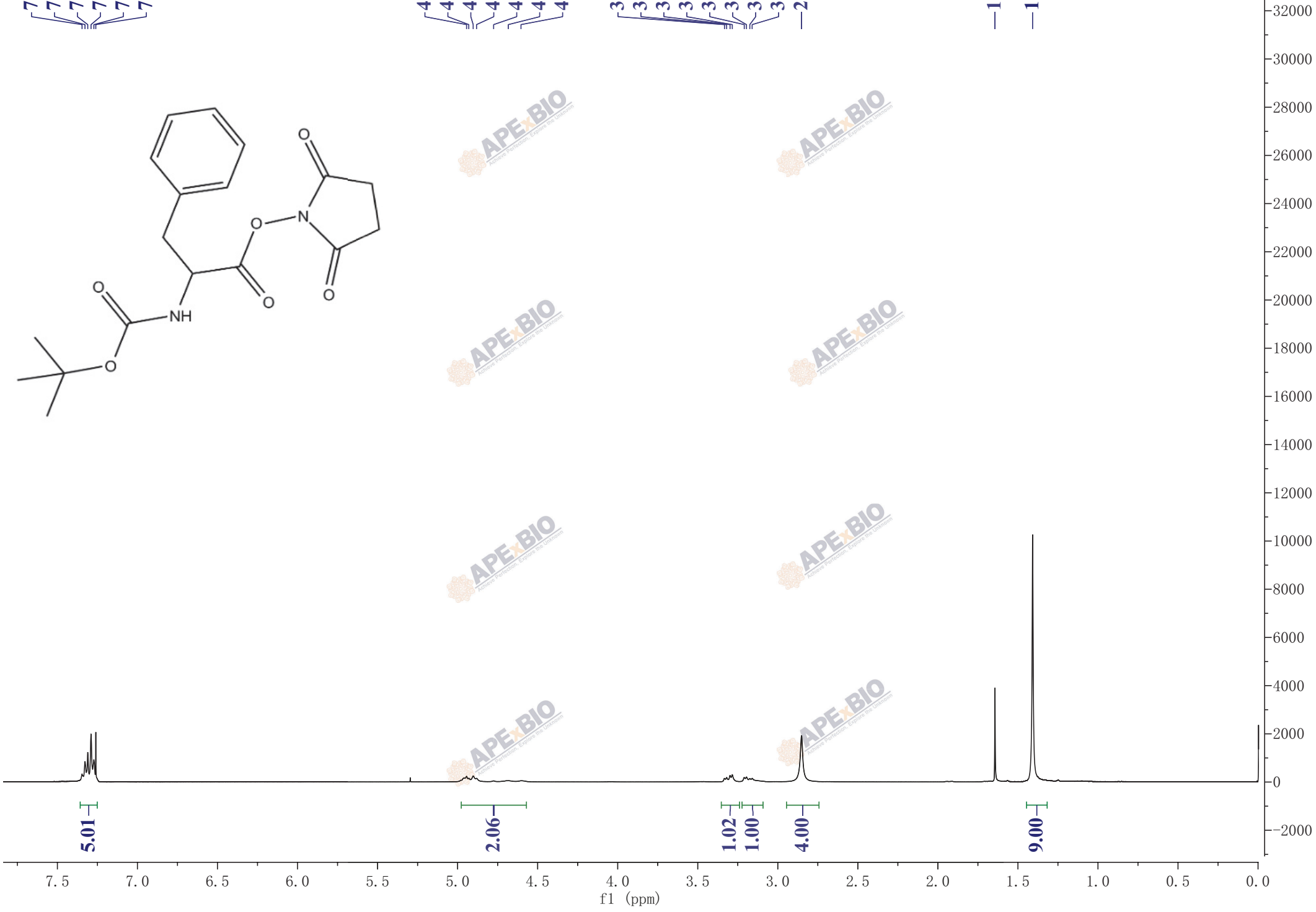
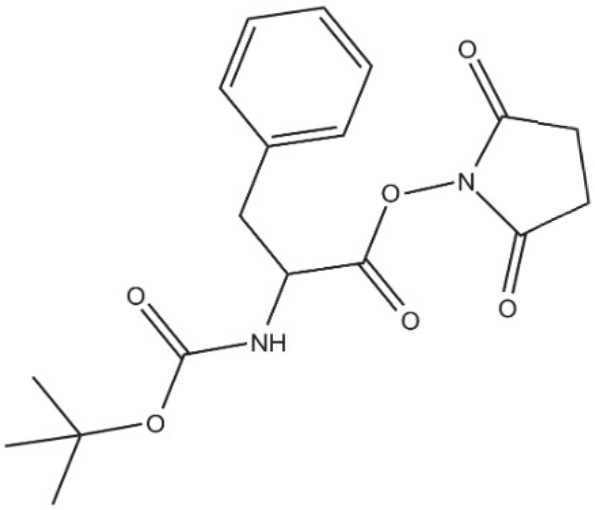


7.35  
7.33  
7.31  
7.29  
7.27  
7.26

4.94  
4.93  
4.90  
4.88  
4.77  
4.68  
4.60

3.33  
3.32  
3.30  
3.28  
3.21  
3.20  
3.17  
3.16  
2.85

1.64  
1.41



5.01

2.06

1.02

1.00

4.00

9.00

f1 (ppm)