

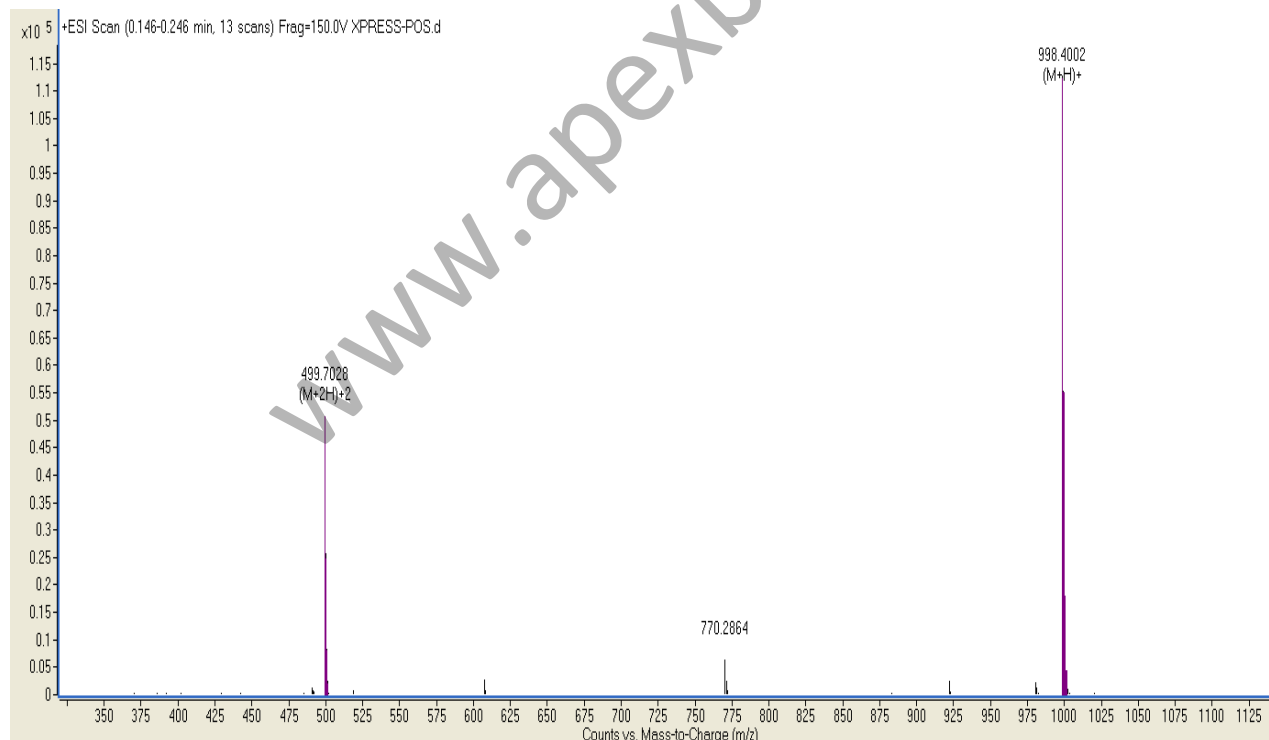
1. Analysis Information

Product Name:	Xpress Tag Peptide
Operator:	David
Injection Date:	3/16/2013 05:05:22 PM
Inj. Volume:	1
Batch No.:	1

2. Acquisition Parameter

Probe:	ESI
Gas Temp:	350°C
Gas Flow:	11L/min
Nebulizer:	50psi
VCap:	4000v
Fragmentor:	150v
Reference:	m/z 121.050873, 922.009798
T.Flow:	0.3ml/min
B.conc:	20% H ₂ O/80% ACN

3. Result



Molecular Weight:	997.3876
m/z(M+H) Base Peak :	998.4002
m/z(M+2H) Base Peak :	498.7028