

# High Performance Liquid Chromatography

## 1. Analysis Information

Product Name:	KRN 633
Operator:	David
Injection Date:	5/9/2017 9:59:54 PM
Batch No.:	2

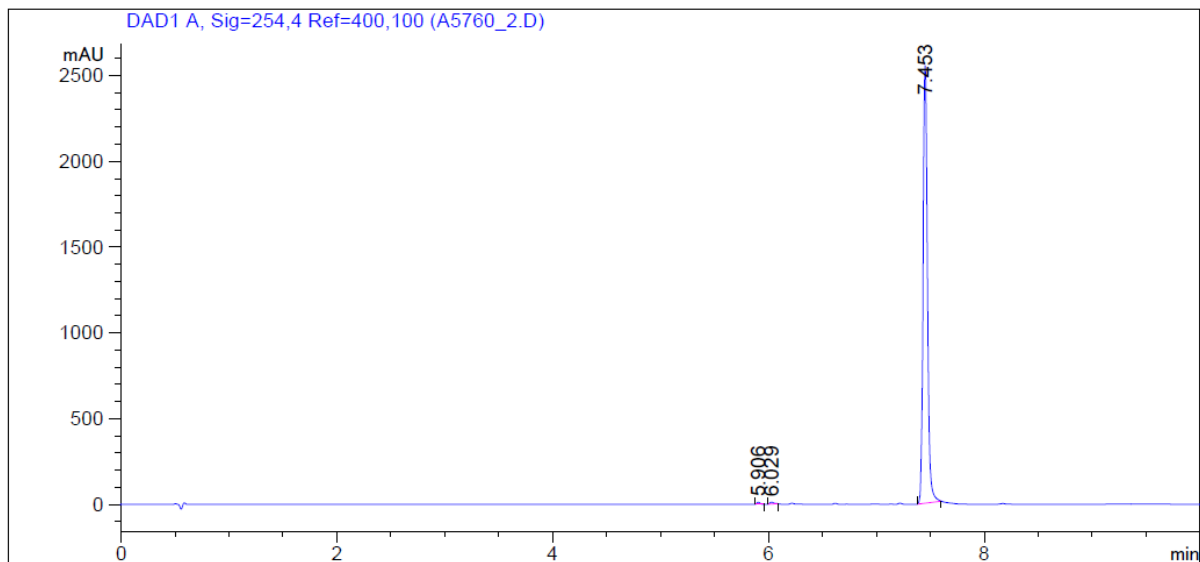
## 2. HPLC Condition

Column:	Athena C18, 3 $\mu$ m, 2.1mm $\times$ 100 mm
Solvent A:	0.1% H <sub>3</sub> PO <sub>4</sub> in 100% Acetonitrile
Solvent B:	0.1% H <sub>3</sub> PO <sub>4</sub> in 100% Water

Gradient:	Time	A	B
	0.0min	0%	100%
	2.0min	0%	100%
	7.0min	95%	5%
	10.0min	95%	5%
	10.0min	Stop	Stop

Flow rate:	0.45ml/min
Wavelength:	254nm
Volume:	10 $\mu$ l

## 3. Result



Rank	RetTime(min)	Area(mAU*s)	Area %
1	5.906	25.92406	0.3572
2	6.029	25.29764	0.3486
3	7.453	7205.51855	99.2942