

# High Performance Liquid Chromatography

## Analysis Information

**Product Name:** Cyclic Pifithrin- $\alpha$  hydrobromide

**Operator:** David

**Injection Date:** 3/25/2021 5:56:08 AM

**Batch No.:** 2

## HPLC Condition

**Column :** ZORBAX Eclipse Pluse C18 3.5 $\mu$ m 4.6mmx100mm

**Solvent A:** H2O+0.1%TFA

**Solvent B:** ACN+0.1%TFA

**Gradient:**

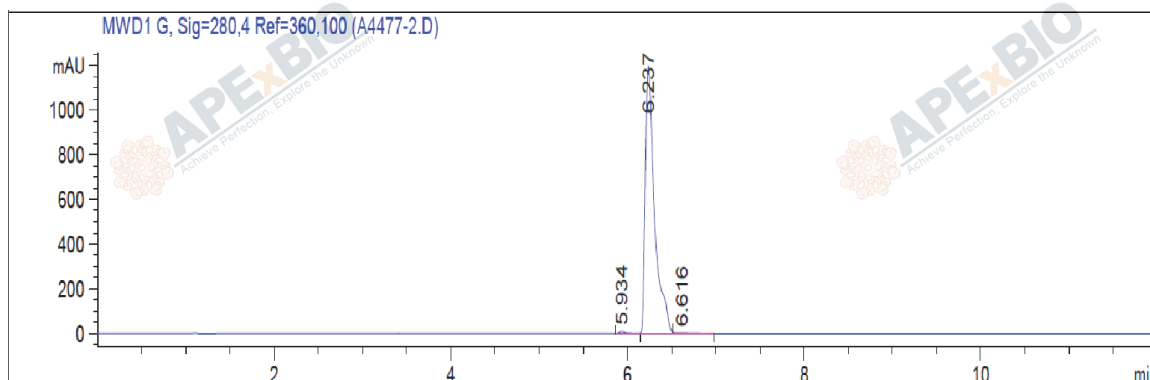
Time	A	B
0.0min	80%	20%
2.0min	80%	20%
7.0min	5%	95%
10.0min	0%	100%
12.0min	0%	100%
15.0min	Stop	Stop

**Flow rate:** 1ml/min

**Wavelength:** 280nm

**Volume:** 5 $\mu$ l

## Result



Rank	RetTime(min)	Area(mAU*s)	Area %
1	5.934	38.74836	0.4378
2	6.237	8792.17383	99.3454
3	6.616	19.18846	0.2168

## Caution

**FOR RESEARCH PURPOSES ONLY.**

**NOT FOR HUMAN, VETERINARY DIAGNOSTIC OR THERAPEUTIC USE.**

**APEX BIO Technology**

**www.apexbt.com**

7505 Fannin street, Suite 410, Houston, TX 77054.

Tel: +1-832-696-8203 | Fax: +1-832-641-3177 | Email: info@apexbt.com