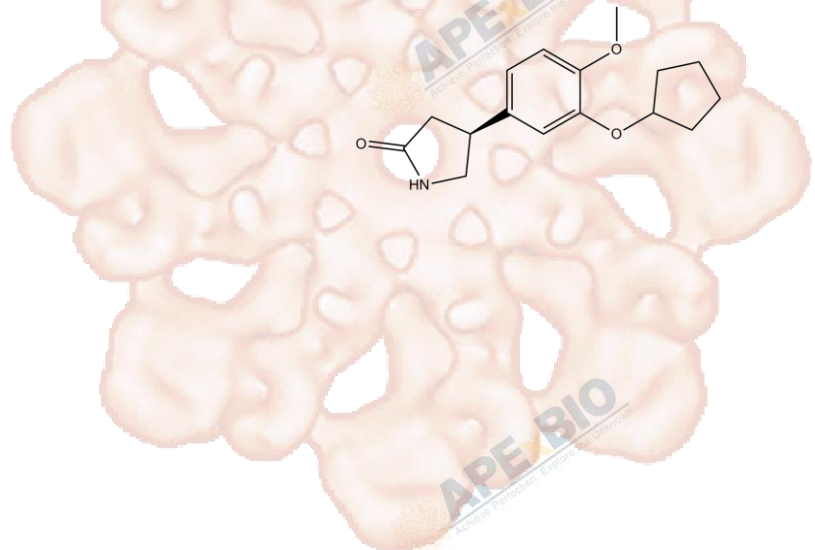


Product Data Sheet

S- (+)-Rolipram

Cat. No.:	A4349
CAS No.:	85416-73-5
Formula:	C ₁₆ H ₂₁ NO ₃
M.Wt:	275.34
Synonyms:	
Target:	Metabolism
Pathway:	PDE
Storage:	Store at -20°C



Solvent & Solubility

insoluble in H₂O; ≥13.9 mg/mL in DMSO; ≥20.76 mg/mL in EtOH with gentle warming and ultrasonic

In Vitro

Preparing Stock Solutions	Solvent		Mass		
	Concentration		1mg	5mg	10mg
	1 mM		3.6319 mL	18.1594 mL	36.3187 mL
	5 mM		0.7264 mL	3.6319 mL	7.2637 mL
	10 mM		0.3632 mL	1.8159 mL	3.6319 mL

Please refer to the solubility information to select the appropriate solvent.

Biological Activity

Shortsummary: CAMP-specific PDE4 inhibitor

IC₅₀ & Target

In Vitro

Cell Viability Assay

Preparation method:

In Vivo

Animal experiment

Applications:

Product Citations

See more customer validations on www.apexbt.com.

References

Caution

FOR RESEARCH PURPOSES ONLY.

NOT FOR HUMAN, VETERINARY DIAGNOSTIC OR THERAPEUTIC USE.

Specific storage and handling information for each product is indicated on the product datasheet. Most APEX BIO products are stable under the recommended conditions. Products are sometimes shipped at a temperature that differs from the recommended storage temperature. Shortterm storage of many products are stable in the short-term at temperatures that differ from that required for long-term storage. We ensure that the product is shipped under conditions that will maintain the quality of the reagents. Upon receipt of the product, follow the storage recommendations on the product data sheet.

APEX BIO Technology

www.apexbt.com

7505 Fannin street, Suite 410, Houston, TX 77054.

Tel: +1-832-696-8203 | Fax: +1-832-641-3177 | Email: info@apexbt.com

