

# High Performance Liquid Chromatography

## Analysis Information

**Product Name:** Aminophylline  
**Operator:** David  
**Injection Date:** 3/19/2019 6:25:46 PM  
**Batch No.:** 2

## HPLC Condition

**Column :** ZORBAX Eclipse Pluse C18 3.5 $\mu$ m 4.6mmx100mm

**Solvent A:** H2O+0.1%TFA

**Solvent B:** ACN+0.1%TFA

**Gradient:**

Time	A	B
0.0min	95%	5%
2.0min	95%	5%
7.0min	5%	95%
10.00min	0%	100%
12.00min	0%	100%
12.10min	95%	5%
15.00min	Stop	Stop

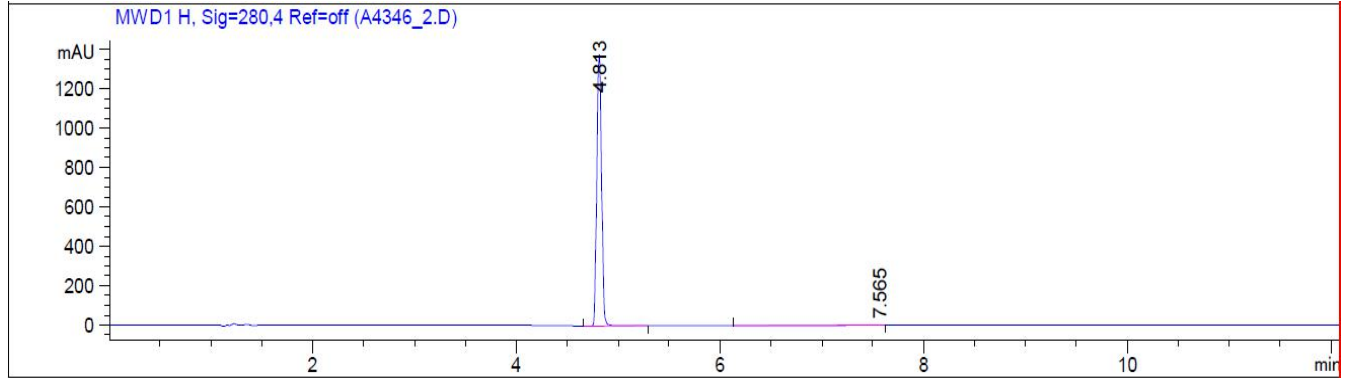
**Flow rate:** 1mL/min

**Wavelength:** 280nm

Volume:

3µl

## Result



Rank	RetTime(min)	Area(mAU*s)	Area %
1	4.813	4472.81592	99.0515
2	7.565	42.82955	0.9485

## Caution

**FOR RESEARCH PURPOSES ONLY.**

**NOT FOR HUMAN, VETERINARY DIAGNOSTIC OR THERAPEUTIC USE.**

**APEX BIO Technology**

**[www.apexbt.com](http://www.apexbt.com)**

7505 Fannin street, Suite 410, Houston, TX 77054.

Tel: +1-832-696-8203 | Fax: +1-832-641-3177 | Email: [info@apexbt.com](mailto:info@apexbt.com)