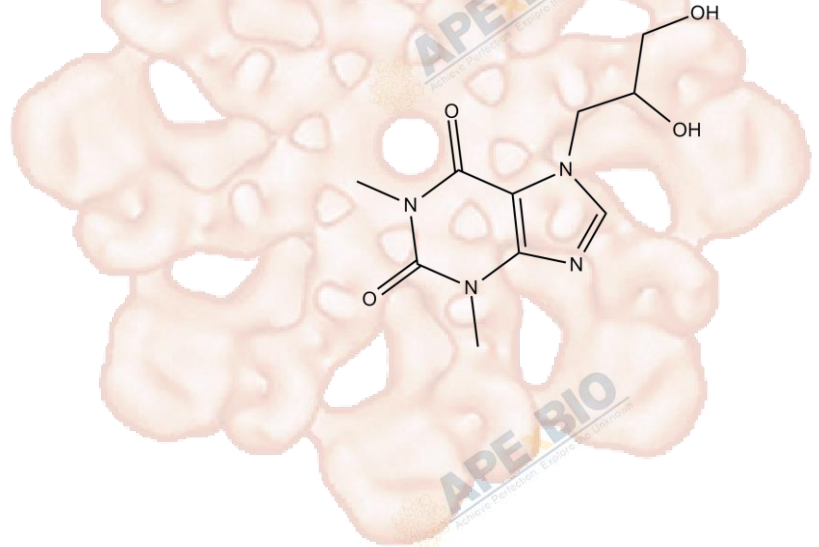


Product Data Sheet

Dyphylline

Cat. No.:	A4343
CAS No.:	479-18-5
Formula:	C ₁₀ H ₁₄ N ₄ O ₄
M.Wt:	254.24
Synonyms:	
Target:	Metabolism
Pathway:	PDE
Storage:	Store at -20°C



Solvent & Solubility

≥17.17 mg/mL in H₂O; ≥21.96 mg/mL in EtOH with gentle warming and ultrasonic; ≥7.8 mg/mL in DMSO

In Vitro

Preparing Stock Solutions	Solvent	Mass		
		1mg	5mg	10mg
	Concentration			
	1 mM	3.9333 mL	19.6665 mL	39.3329 mL
	5 mM	0.7867 mL	3.9333 mL	7.8666 mL
	10 mM	0.3933 mL	1.9666 mL	3.9333 mL

Please refer to the solubility information to select the appropriate solvent.

Biological Activity

Shortsummary

Pan-PDE inhibitor

IC₅₀ & Target

In Vitro

Cell Viability Assay

Preparation method:

In Vivo

Animal experiment

Applications:

Product Citations

See more customer validations on www.apexbt.com.

References

Caution

FOR RESEARCH PURPOSES ONLY.

NOT FOR HUMAN, VETERINARY DIAGNOSTIC OR THERAPEUTIC USE.

Specific storage and handling information for each product is indicated on the product datasheet. Most APEX BIO products are stable under the recommended conditions. Products are sometimes shipped at a temperature that differs from the recommended storage temperature. Shortterm storage of many products are stable in the short-term at temperatures that differ from that required for long-term storage. We ensure that the product is shipped under conditions that will maintain the quality of the reagents. Upon receipt of the product, follow the storage recommendations on the product data sheet.

APEX BIO Technology

www.apexbt.com

7505 Fannin street, Suite 410, Houston, TX 77054.

Tel: +1-832-696-8203 | Fax: +1-832-641-3177 | Email: info@apexbt.com

