

9.20

7.76

7.73

7.66

7.64

7.42

7.41

7.40

7.35

7.34

7.33

6.95

6.93

6.61

5.99

4.22

3.60

3.17

2.60

2.59

2.59

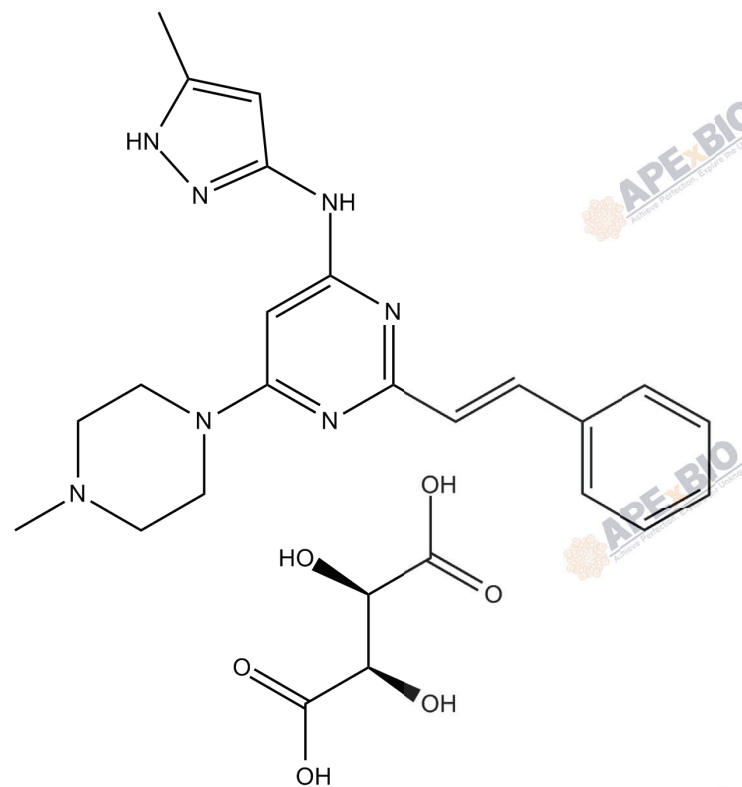
2.50

2.50

2.50

2.36

2.20



1.00

1.03

2.02

2.00

0.97

0.99

0.79

0.84

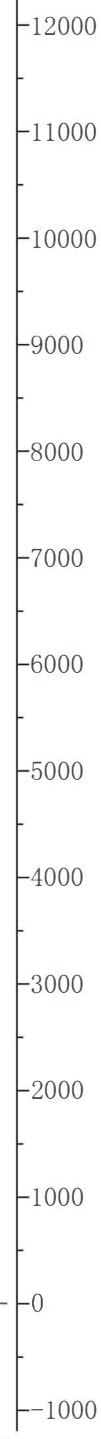
2.24

3.97

4.01

3.08

3.02



f1 (ppm)