

# High Performance Liquid Chromatography

## Analysis Information

**Product Name:** Glimepiride  
**Operator:** David  
**Injection Date:** 5/9/2019 2:51:35 PM  
**Batch No.:** 2

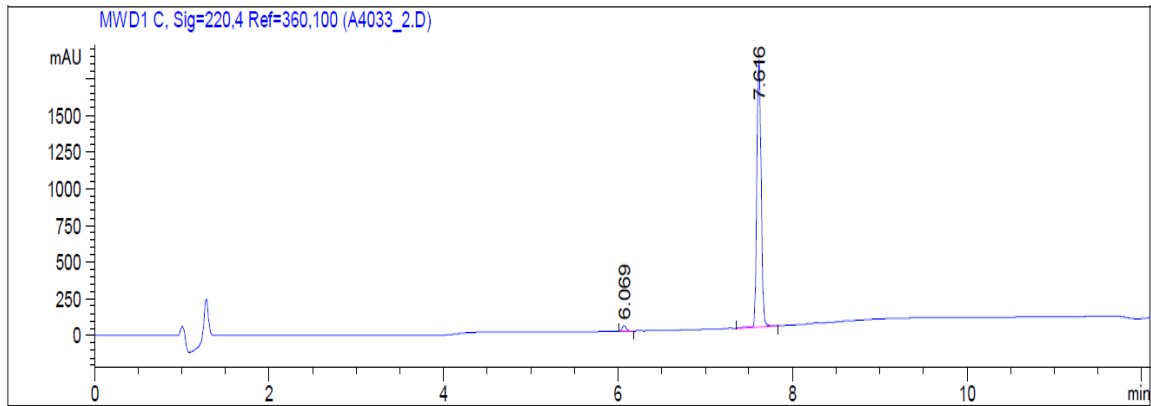
## HPLC Condition

**Column :** ZORBAX Eclipse Pluse C18 3.5 $\mu$ m 4.6mmx100mm  
**Solvent A:** H2O+1‰ TFA  
**Solvent B:** ACN+1‰ TFA  
**Gradient:**

| Time    | A    | B    |
|---------|------|------|
| 0.0min  | 80%  | 20%  |
| 2.0min  | 80%  | 20%  |
| 7.0min  | 5%   | 95%  |
| 10.0min | 0%   | 100% |
| 12.0min | 0%   | 100% |
| 12.1min | 80%  | 20%  |
| 15.0min | Stop | Stop |

**Flow rate:** 1ml/min  
**Wavelength:** 220nm  
**Volume:** 5 $\mu$ l

## Result



| Rank | RetTime(min) | Area(mAU*s) | Area %  |
|------|--------------|-------------|---------|
| 1    | 6.069        | 118.17426   | 1.8548  |
| 2    | 7.616        | 6253.13281  | 98.1452 |

## Caution

**FOR RESEARCH PURPOSES ONLY.**

**NOT FOR HUMAN, VETERINARY DIAGNOSTIC OR THERAPEUTIC USE.**

**APExBIO Technology**

**[www.apexbt.com](http://www.apexbt.com)**

7505 Fannin street, Suite 410, Houston, TX 77054.

Tel: +1-832-696-8203 | Fax: +1-832-641-3177 | Email: [info@apexbt.com](mailto:info@apexbt.com)