

# High Performance Liquid Chromatography

## Analysis Information

**Product Name:** Artemether (SM-224)  
**Operator:** David  
**Injection Date:** 3/26/2019 4:12:00 PM  
**Batch No.:** 1

## HPLC Condition

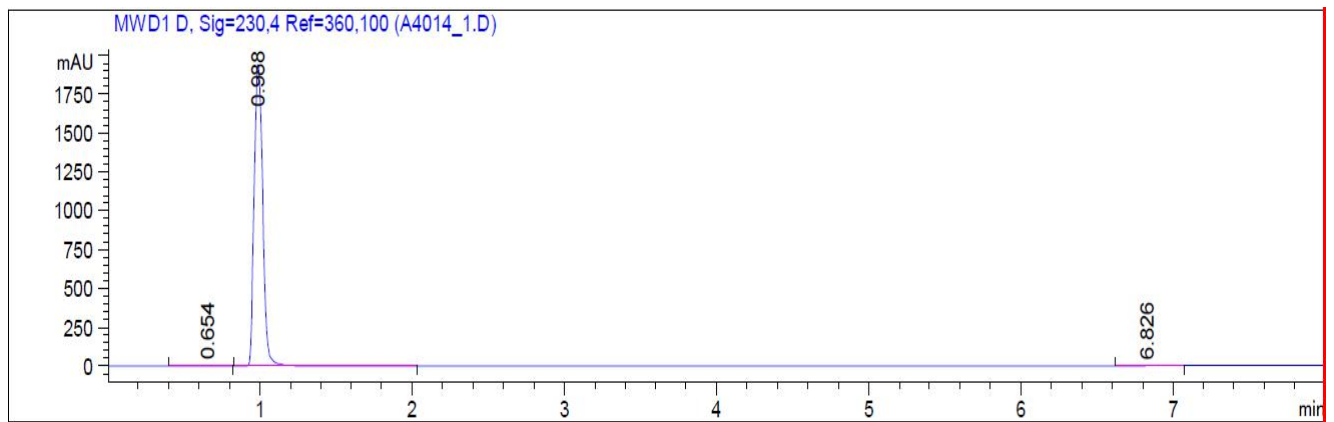
**Column :** ZORBAX Eclipse Pluse C18 3.5 $\mu$ m 4.6mmx100mm  
**Solvent A:** H2O+0.1%TFA  
**Solvent B:** ACN+0.1%TFA

**Gradient:**

Time	A	B
0.0min	15%	85%
8.0min	15%	85%
10.00min	Stop	Stop

**Flow rate:** 1mL/min  
**Wavelength:** 230nm  
**Volume:** 0.5 $\mu$ l

## Result



Rank	RetTime(min)	Area(mAU*s)	Area %
1	0.654	2.43596	0.0316
2	0.988	7693.85889	99.9410
3	6.826	2.10991	0.0274

## Caution

**FOR RESEARCH PURPOSES ONLY.**

**NOT FOR HUMAN, VETERINARY DIAGNOSTIC OR THERAPEUTIC USE.**

**APExBIO Technology**

**[www.apexbt.com](http://www.apexbt.com)**

7505 Fannin street, Suite 410, Houston, TX 77054.

Tel: +1-832-696-8203 | Fax: +1-832-641-3177 | Email: [info@apexbt.com](mailto:info@apexbt.com)