

High Performance Liquid Chromatography

Analysis Information

Product Name: SU5416
Operator: David
Injection Date: 10/29/2018 6:16:34 PM
Batch No.: 6

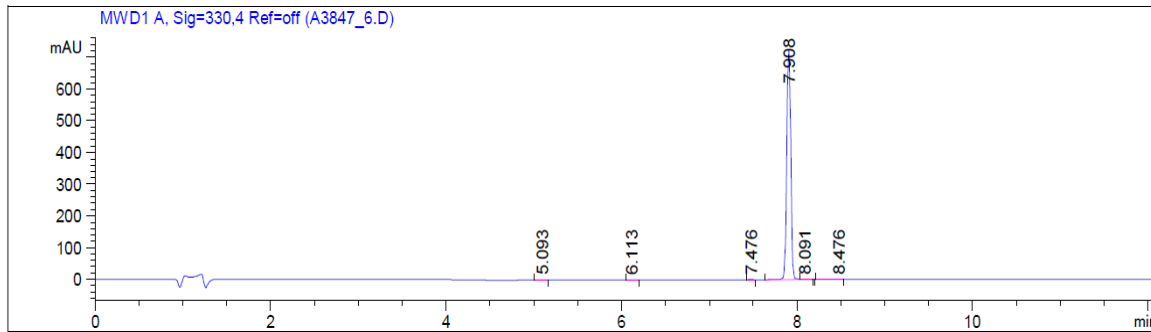
HPLC Condition

Column : ZORBAX Eclipse Pluse C18 3.5 μ m 4.6mmx100mm
Solvent A: H2O+1% TFA
Solvent B: ACN+1% TFA
Gradient:

Time	A	B
0.0min	80%	20%
2.0min	80%	20%
7.0min	5%	95%
10.0min	0%	100%
12.0min	0%	100%
12.1min	80%	20%
15.0min	Stop	Stop

Flow rate: 1ml/min
Wavelength: 330nm
Volume: 5 μ l

Result



Rank	RetTime(min)	Area(mAU*s)	Area %
1	5.093	2.33622	0.1022
2	6.113	1.47161	0.0644
3	7.476	1.03795	0.0454
4	7.908	2275.83350	99.5253
5	8.091	2.53894	0.1110
6	8.476	3.47113	0.1518

Caution

FOR RESEARCH PURPOSES ONLY.

NOT FOR HUMAN, VETERINARY DIAGNOSTIC OR THERAPEUTIC USE.

APEX BIO Technology

www.apexbt.com

7505 Fannin street, Suite 410, Houston, TX 77054.

Tel: +1-832-696-8203 | Fax: +1-832-641-3177 | Email: info@apexbt.com