

# High Performance Liquid Chromatography

## Analysis Information

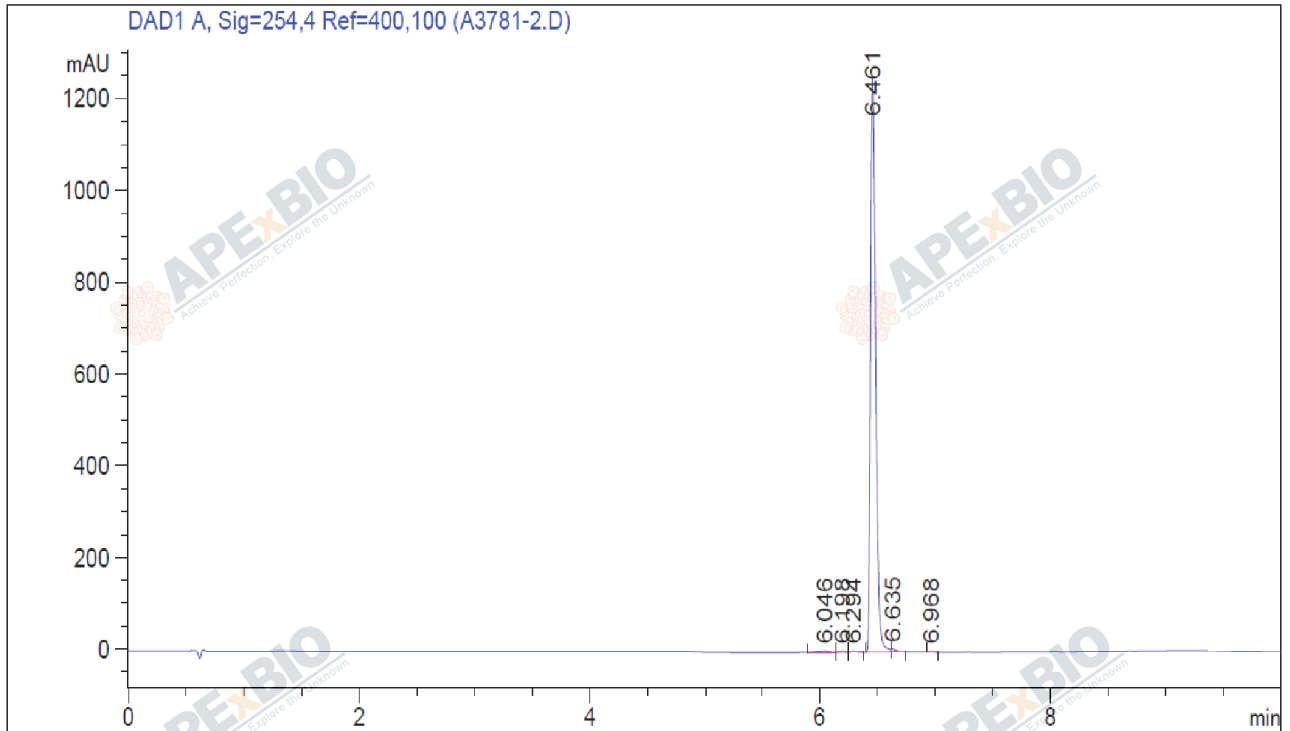
**Product Name:** Ruxolitinib phosphate  
**Operator:** David  
**Injection Date:** 6/13/2022 9:10:16 PM  
**Batch No.:** 2

## HPLC Condition

**Column :** Athena C18, 3  $\mu$ m, 2.1mm  $\times$  100 mm  
**Solvent A:** ACN+0.1%TFA  
**Solvent B:** H2O+0.1%TFA  
**Gradient:**

Time	A	B
0.0min	0%	100%
2.0min	0%	100%
7.0min	95%	5%
10.0min	95%	5%
10.0min	Stop	Stop

**Flow rate:** 0.45ml/min  
**Wavelength:** 254nm  
**Volume:** 3 $\mu$ l



Rank	RetTime(min)	Area(mAU*s)	Area %
1	6.046	15.72531	0.4020
2	6.198	6.76008	0.1728
3	6.294	5.27921	0.1349
4	6.461	3863.55151	98.7597
5	6.635	17.29640	0.4421
6	6.968	3.45955	0.0884

## Caution

**FOR RESEARCH PURPOSES ONLY.**

**NOT FOR HUMAN, VETERINARY DIAGNOSTIC OR THERAPEUTIC USE.**

[www.apexbt.com](http://www.apexbt.com)

7505 Fannin street, Suite 410, Houston, TX 77054.

Tel: +1-832-696-8203 | Fax: +1-832-641-3177 | Email: [info@apexbt.com](mailto:info@apexbt.com)

