

High Performance Liquid Chromatography

Analysis Information

Product Name: Rilpivirine
Operator: David
Injection Date: 2/27/2019 10:18:05 AM
Batch No.: 1

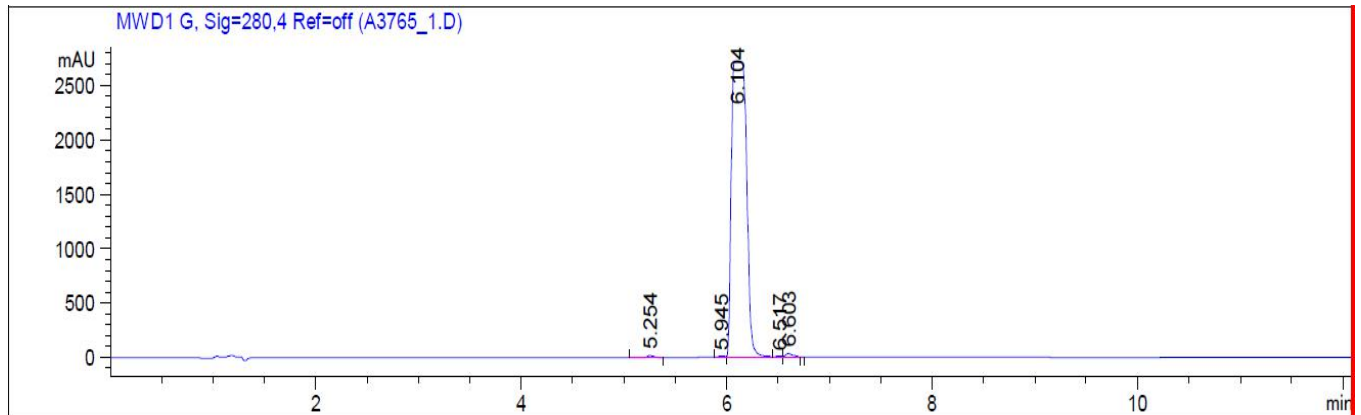
HPLC Condition

Column : ZORBAX Eclipse Pluse C18 3.5 μ m 4.6mmx100mm
Solvent A: H2O+0.1%TFA
Solvent B: ACN+0.1%TFA
Gradient:

Time	A	B
0.0min	80%	20%
2.0min	80%	20%
7.0min	5%	95%
10.00min	0%	100%
12.00min	0%	100%
12.10min	80%	20%
15.00min	Stop	Stop

Flow rate: 1mL/min
Wavelength: 280nm
Volume: 8 μ l

Result



Rank	RetTime(min)	Area(mAU*s)	Area %
1	5.254	84.05048	0.3052
2	5.945	37.85827	0.1375
3	6.104	2.72526e4	98.9554
4	6.517	15.63670	0.0568
5	6.603	150.15269	0.5452

Caution

FOR RESEARCH PURPOSES ONLY.

NOT FOR HUMAN, VETERINARY DIAGNOSTIC OR THERAPEUTIC USE.

APExBIO Technology

www.apexbt.com

7505 Fannin street, Suite 410, Houston, TX 77054.

Tel: +1-832-696-8203 | Fax: +1-832-641-3177 | Email: info@apexbt.com