

# High Performance Liquid Chromatography

## Analysis Information

**Product Name:** GDC-0941 dimethanesulfonate  
**Operator:** David  
**Injection Date:** 4/21/2020 2:08:17 PM  
**Batch No.:** 1

## HPLC Condition

**Column :** ZORBAX Eclipse Pluse C18 3.5 $\mu$ m 4.6mmx100mm  
**Solvent A:** H2O+0.1%TFA  
**Solvent B:** ACN+0.1%TFA  
**Gradient:**

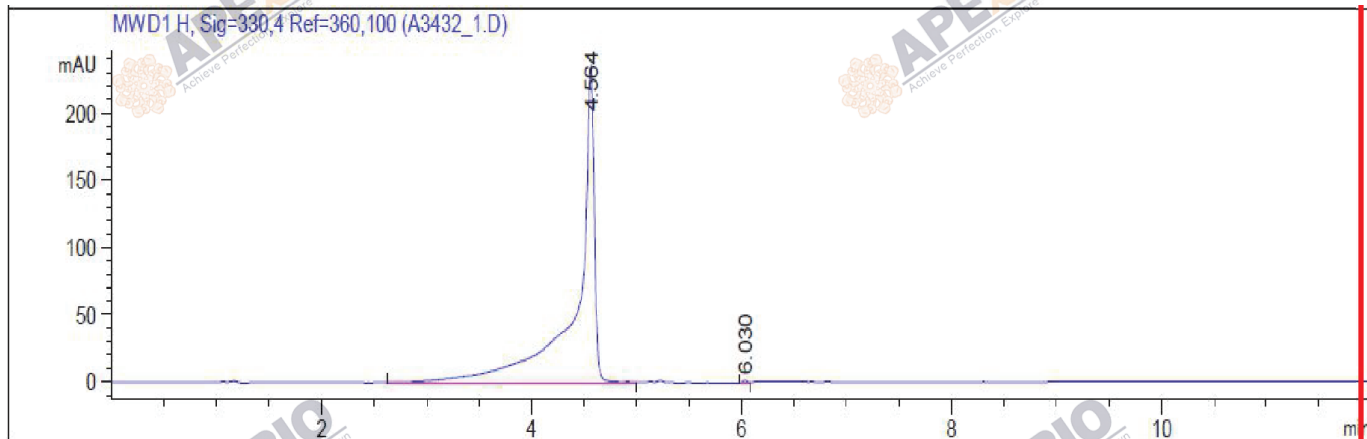
Time	A	B
0.0min	80%	20%
2.0min	80%	20%
7.0min	5%	95%
10.00min	0%	100%
12.00min	0%	100%
15.00min	Stop	Stop

**Flow rate:** 1mL/min  
**Wavelength:** 330nm

Volume:

5µl

## Result



Rank	RetTime(min)	Area(mAU*s)	Area %
1	4.564	2744.91040	99.7806
2	6.030	6.03442	0.2194

## Caution

**FOR RESEARCH PURPOSES ONLY.**

**NOT FOR HUMAN, VETERINARY DIAGNOSTIC OR THERAPEUTIC USE.**

**APEX BIO Technology**

**www.apexbt.com**

7505 Fannin street, Suite 410, Houston, TX 77054.

Tel: +1-832-696-8203 | Fax: +1-832-641-3177 | Email: info@apexbt.com