

# High Performance Liquid Chromatography

## Analysis Information

**Product Name:** Ampalex  
**Operator:** David  
**Injection Date:** 2/21/2019 4:30:46 AM  
**Batch No.:** 1

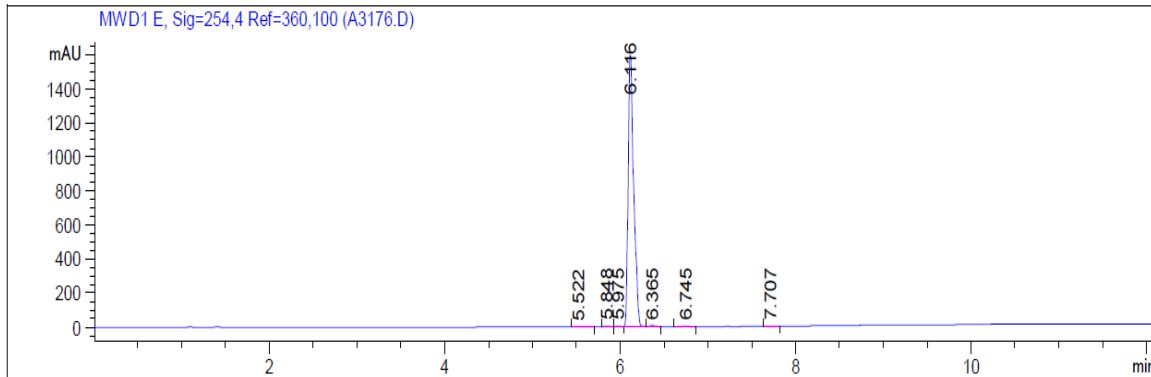
## HPLC Condition

**Column :** ZORBAX Eclipse Pluse C18 3.5 $\mu$ m 4.6mmx100mm  
**Solvent A:** H2O+1‰ TFA  
**Solvent B:** ACN+1‰ TFA  
**Gradient:**

Time	A	B
0.0min	95%	5%
2.0min	95%	5%
7.0min	5%	95%
10.0min	0%	100%
12.0min	0%	100%
12.1min	95%	5%
15.0min	Stop	Stop

**Flow rate:** 1ml/min  
**Wavelength:** 254nm  
**Volume:** 5 $\mu$ l

# Result



Rank	RetTime(min)	Area(mAU*s)	Area %
1	5.522	15.75503	0.2213
2	5.848	16.73804	0.2351
3	5.975	15.36122	0.2158
4	6.116	7016.00195	98.5496
5	6.365	26.49519	0.3722
6	6.745	19.80193	0.2781
7	7.707	9.10779	0.1279

## Caution

**FOR RESEARCH PURPOSES ONLY.**

**NOT FOR HUMAN, VETERINARY DIAGNOSTIC OR THERAPEUTIC USE.**

**APEX BIO Technology**

[www.apexbt.com](http://www.apexbt.com)

7505 Fannin street, Suite 410, Houston, TX 77054.

Tel: +1-832-696-8203 | Fax: +1-832-641-3177 | Email: [info@apexbt.com](mailto:info@apexbt.com)