

Mass Spectrometry

1. Analysis Information

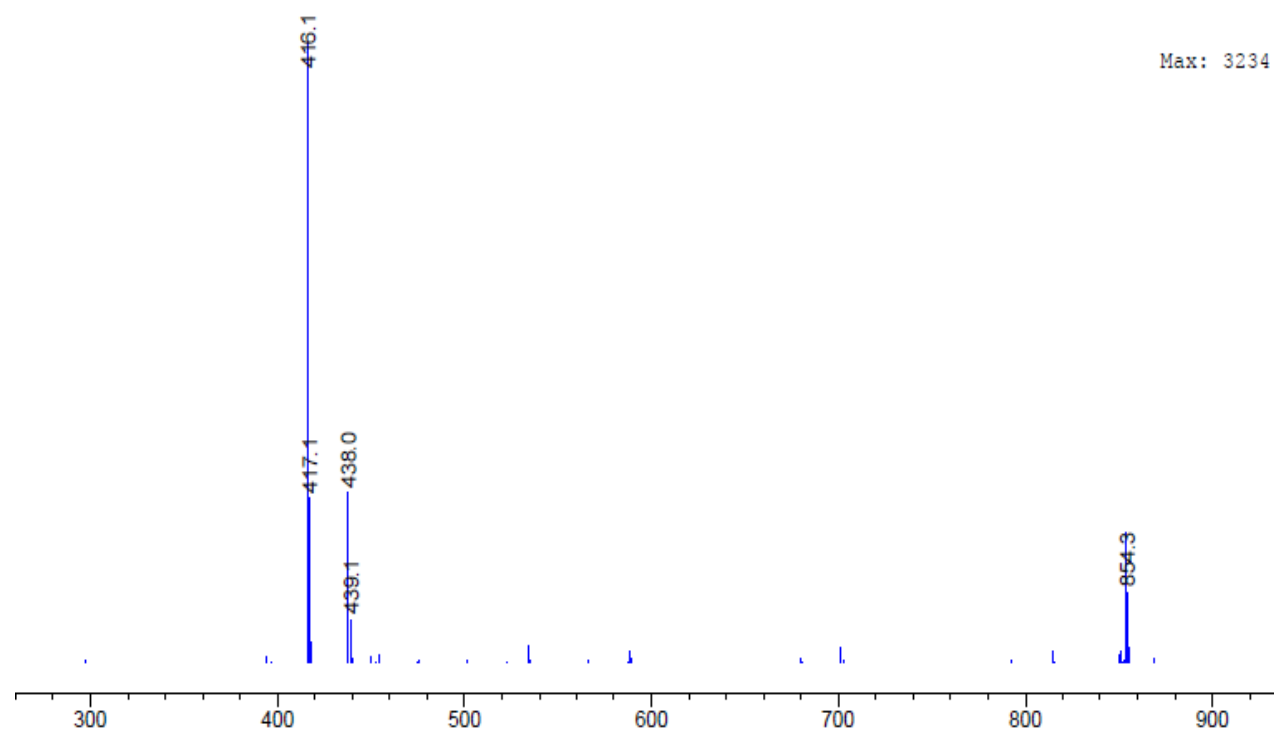
Product Name:	CAL-101 (Idelalisib, GS-1101)
Operator:	David
Injection Date:	11/25/2013 10:26:48 AM
Inj. Volume:	1
Batch No.:	1

2. Acquisition Parameter

Probe:	ESI
Gas Temp:	350°C
Gas Flow:	11L/min
Nebulizer:	50psi
VCap:	4000v
Fragmentor:	150v
Reference:	m/z 121.050873, 922.009798
T.Flow:	0.3ml/min
B.conc:	20%H ₂ O/80%ACN

3. Result

*MSD1 SPC, time=0.484:1.334 of D:\DATA\DDDCSYN\20131122\ZF000153.D MM-ES+APCI, Pos, Scan, Frag: 70



Molecular Weight:	415.43
m/z(M+H) Base Peak :	416.10