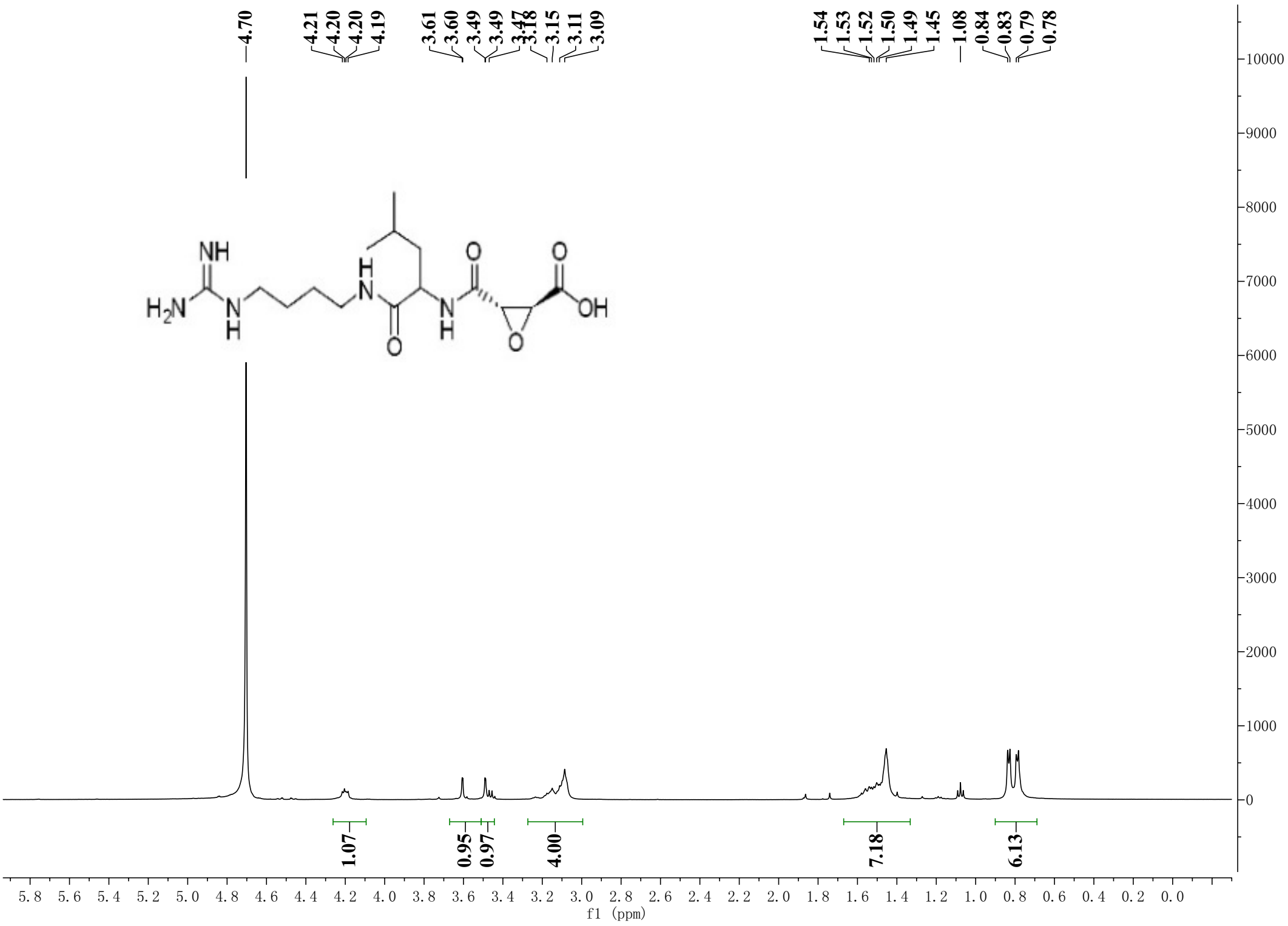


4.70

4.21
4.20
4.20
4.19
3.61
3.60
3.49
3.49
3.47
3.18
3.15
3.11
3.09

1.54
1.53
1.52
1.50
1.49
1.45
1.08
0.84
0.83
0.79
0.78



1.07

0.95

0.97

4.00

7.18

6.13

f1 (ppm)