

High Performance Liquid Chromatography

Analysis Information

Product Name: AEBSF.HCl
Operator: David
Injection Date: 11/15/2019 10:06:47 AM
Batch No.: 12

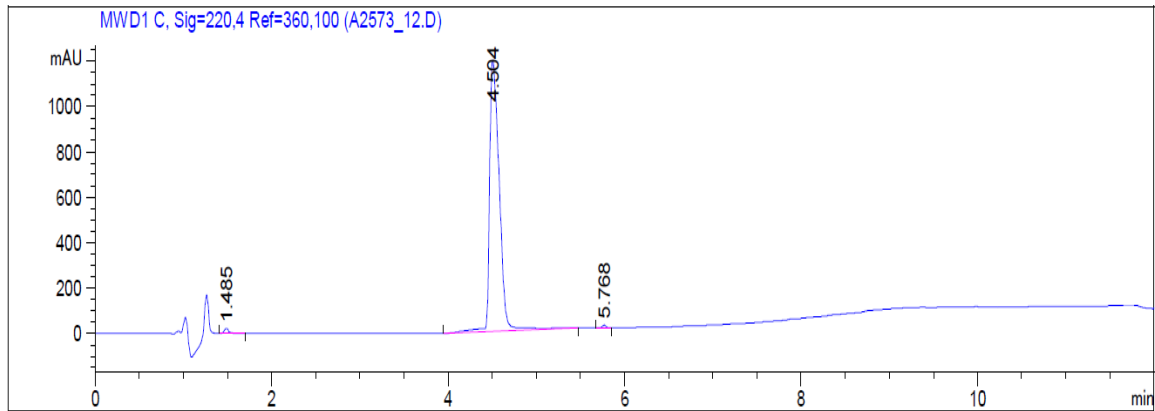
HPLC Condition

Column : ZORBAX Eclipse Pluse C18 3.5 μ m 4.6mmx100mm
Solvent A: H2O+1‰ TFA
Solvent B: ACN+1‰ TFA
Gradient:

| Time | A | B |
|---------|------|------|
| 0.0min | 80% | 20% |
| 2.0min | 80% | 20% |
| 7.0min | 5% | 95% |
| 10.0min | 0% | 100% |
| 12.0min | 0% | 100% |
| 12.1min | 80% | 20% |
| 15.0min | Stop | Stop |

Flow rate: 1ml/min
Wavelength: 220nm
Volume: 5 μ l

Result



| Rank | RetTime(min) | Area(mAU*s) | Area % |
|------|--------------|-------------|---------|
| 1 | 1.485 | 81.79741 | 0.8727 |
| 2 | 4.504 | 9255.89844 | 98.7516 |
| 3 | 5.768 | 35.21048 | 0.3757 |

Caution

FOR RESEARCH PURPOSES ONLY.

NOT FOR HUMAN, VETERINARY DIAGNOSTIC OR THERAPEUTIC USE.

APEX BIO Technology

www.apexbt.com

7505 Fannin street, Suite 410, Houston, TX 77054.

Tel: +1-832-696-8203 | Fax: +1-832-641-3177 | Email: info@apexbt.com