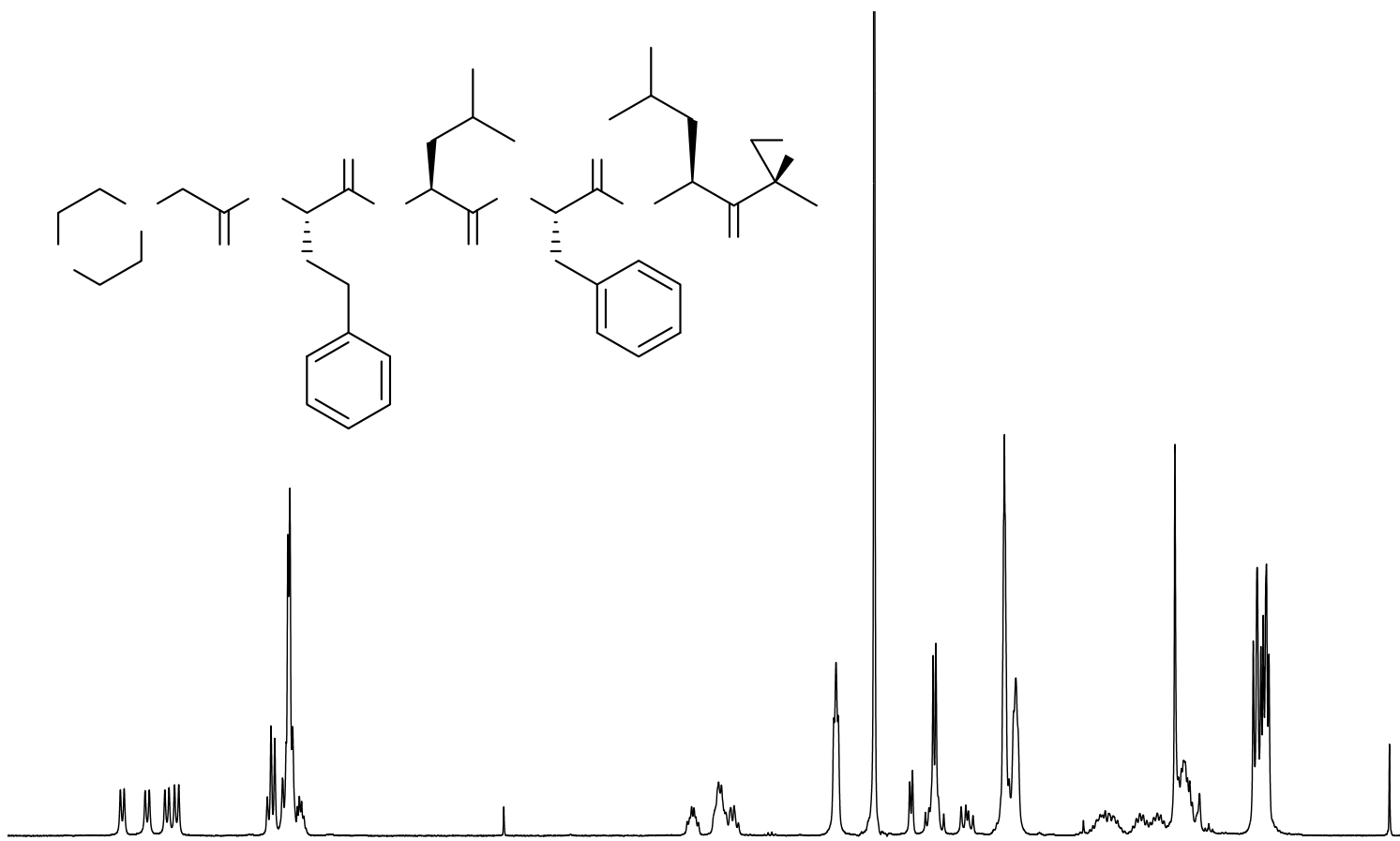
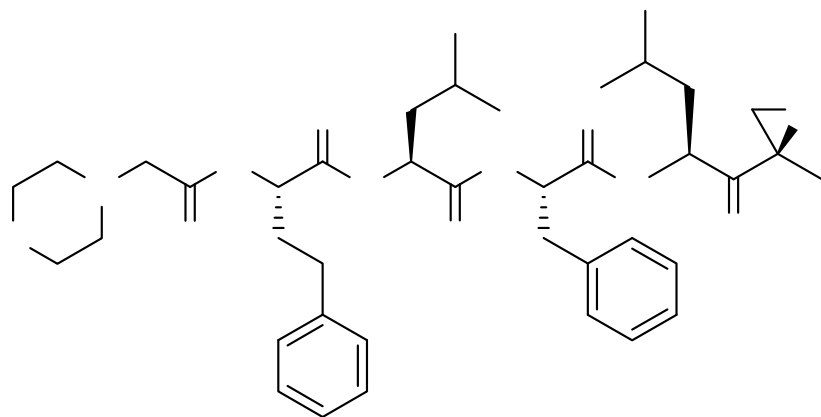


8.265
8.240
8.104
8.077
7.975
7.948
7.912
7.885
7.309
7.285
7.261
7.210
7.186
7.175
7.162
7.144
7.114
7.100
7.085
4.373
4.355
4.273
3.624
3.610
3.595
3.130
3.113
2.978
2.960
2.765
2.454
2.440
1.406
1.363
1.350
1.324
1.310
1.294
0.896
0.871
0.847
0.831
0.811
0.794



8.5 8.0 7.5 7.0 6.5 6.0 5.5 5.0 4.5 4.0 3.5 3.0 2.5 2.0 1.5 1.0 ppm

1.00
1.06
1.03
1.08
2.28
7.82
1.10
1.10
2.32
0.96
4.31
1.06
3.61
1.13
4.45
2.29
1.20
1.21
3.59
4.00
6.43
6.35

NAME Oáãã↔~↑↔áÁÇŞPÉFÍFD
EXPNO 1
PROCNO 1
Date_ 20130717
Time_ 11.18
INSTRUM spect
PROBHD 5 mm PABBO BB-
PULPROG zg30
TD 32768
SOLVENT DMSO
NS 16
DS 2
SWH 6009.615 Hz
FIDRES 0.183399 Hz
AQ 2.7263477 sec
RG 287
DW 83.200 usec
DE 6.50 usec
TE 298.0 K
D1 1.00000000 sec
TD0 1

==== CHANNEL f1 =====
SFO1 300.1324010 MHz
NUC1 1H
P1 12.90 usec
SI 65536
SF 300.1300052 MHz
WDW EM
SSB 0
LB 0.30 Hz
GB 0
PC 1.00