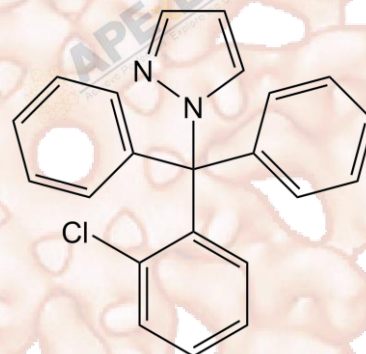


# Product Data Sheet

## TRAM-34

<b>Cat. No.:</b>	A1888
<b>CAS No.:</b>	289905-88-0
<b>Formula:</b>	C <sub>22</sub> H <sub>17</sub> ClN <sub>2</sub>
<b>M.Wt:</b>	344.84
<b>Synonyms:</b>	
<b>Target:</b>	Membrane Transporter/Ion Channel
<b>Pathway:</b>	Potassium Channel
<b>Storage:</b>	Store at -20°C



### Solvent & Solubility

insoluble in H<sub>2</sub>O; insoluble in EtOH; ≥17.25 mg/mL in DMSO

In Vitro

Preparing Stock Solutions	Solvent	Mass		
		1mg	5mg	10mg
	<b>Concentration</b>			
	<b>1 mM</b>	2.8999 mL	14.4995 mL	28.9990 mL
	<b>5 mM</b>	0.5800 mL	2.8999 mL	5.7998 mL
	<b>10 mM</b>	0.2900 mL	1.4499 mL	2.8999 mL

Please refer to the solubility information to select the appropriate solvent.

### Biological Activity

Shortsummary KCa3.1 blocker,potent and highly selective

IC<sub>50</sub> & Target 20 nM (Kd) (KCa3.1)

In Vitro

#### Cell Viability Assay

Preparation method:

In Vivo

#### Animal experiment

Applications:

### Product Citations

See more customer validations on [www.apexbt.com](http://www.apexbt.com).

## References

## Caution

**FOR RESEARCH PURPOSES ONLY.**

**NOT FOR HUMAN, VETERINARY DIAGNOSTIC OR THERAPEUTIC USE.**

*Specific storage and handling information for each product is indicated on the product datasheet. Most APEX BIO products are stable under the recommended conditions. Products are sometimes shipped at a temperature that differs from the recommended storage temperature. Shortterm storage of many products are stable in the short-term at temperatures that differ from that required for long-term storage. We ensure that the product is shipped under conditions that will maintain the quality of the reagents. Upon receipt of the product, follow the storage recommendations on the product data sheet.*

**APEX BIO Technology**

**[www.apexbt.com](http://www.apexbt.com)**

7505 Fannin street, Suite 410, Houston, TX 77054.

Tel: +1-832-696-8203 | Fax: +1-832-641-3177 | Email: [info@apexbt.com](mailto:info@apexbt.com)

