

# High Performance Liquid Chromatography

## Analysis Information

**Product Name:** Amyloid Beta-peptide (25-35)  
(human)

**Operator:** David

**Injection Date:** 10/23/2023 19:08:04

**Batch No.:** 2

## HPLC Condition

**Column :** ZORBAX Eclipse Pluse C18 3.5 $\mu$ m 4.6mmx100mm

**Solvent A:** H2O+0.1%TFA

**Solvent B:** ACN+0.1%TFA

**Gradient:**

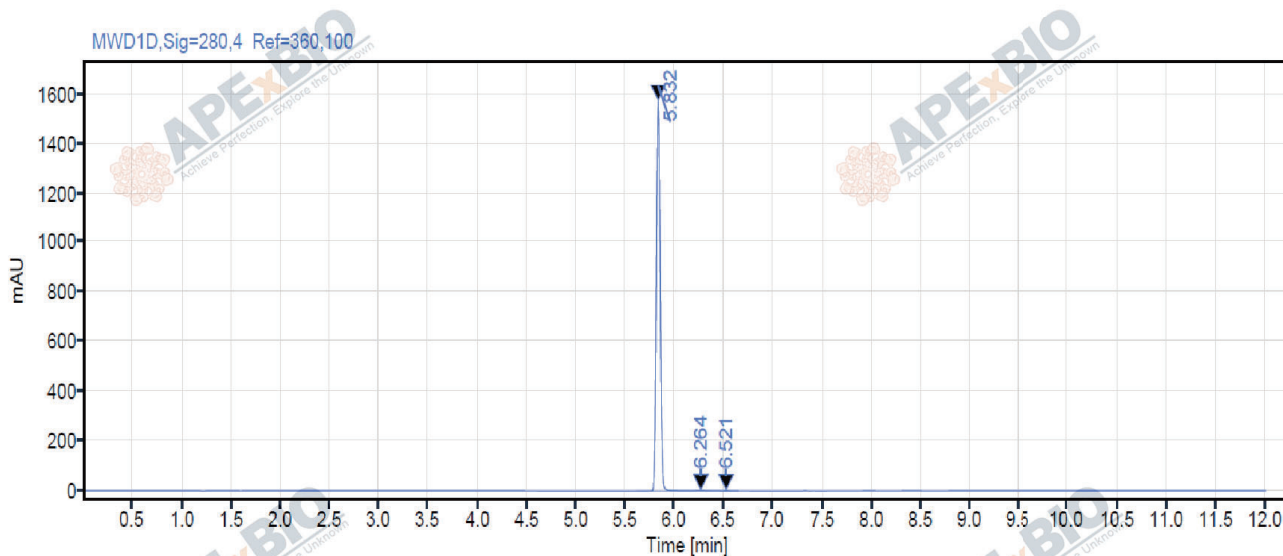
Time	A	B
0.0min	95%	5%
2.0min	95%	5%
7.0min	5%	95%
10.0min	0%	100%
12.0min	0%	100%
15.0min	Stop	Stop

**Flow rate:** 1ml/min

**Wavelength:** 280nm

**Volume:** 2 $\mu$ l

## Result



Rank	RetTime(min)	Area(mAU*s)	Area %
1	5.832	4370.61	99.49
2	6.264	16.39	0.37
3	6.521	5.86	0.13

## Caution

**FOR RESEARCH PURPOSES ONLY.**

**NOT FOR HUMAN, VETERINARY DIAGNOSTIC OR THERAPEUTIC USE.**

**APEX BIO Technology**

**[www.apexbt.com](http://www.apexbt.com)**

7505 Fannin street, Suite 410, Houston, TX 77054.

Tel: +1-832-696-8203 | Fax: +1-832-641-3177 | Email: [info@apexbt.com](mailto:info@apexbt.com)